



ALFA

© ALFA

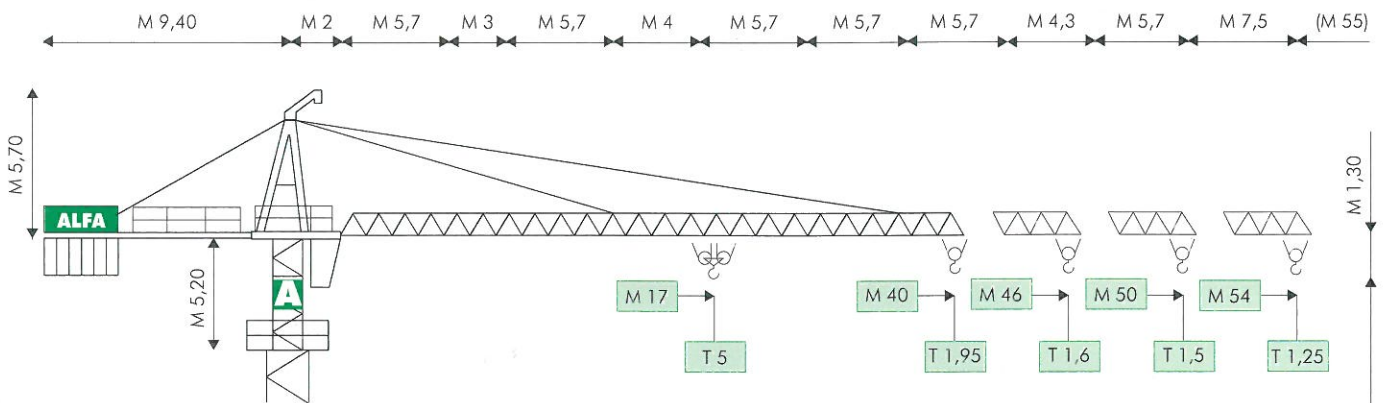
GRUPPO FINALFA



ALBINI - POTENZA

® HYDROMATIC A794

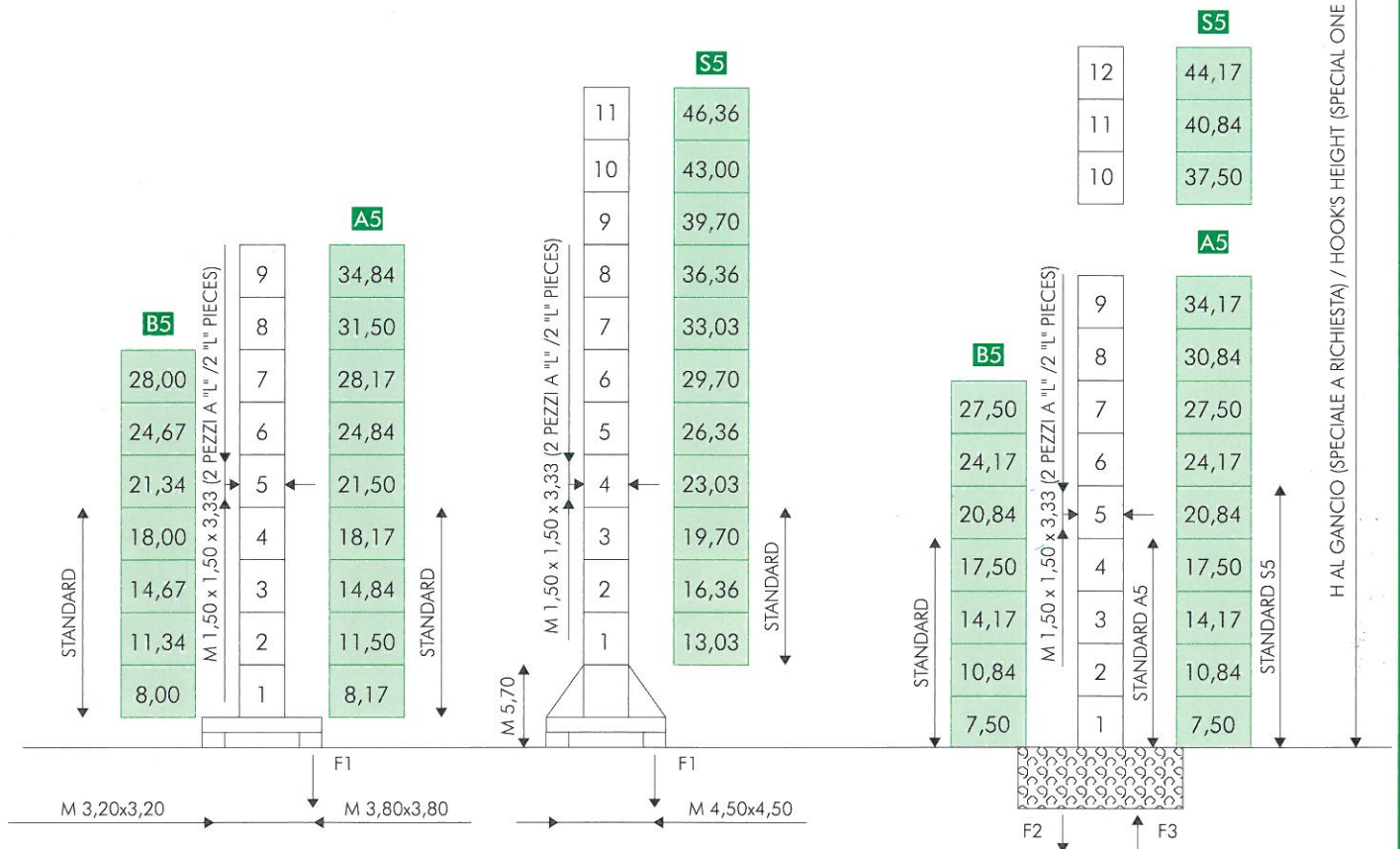
MODELLO/TYPE A 794 B5 - A5 - S5 - CITY. 5



COMPOSIZIONE TORRE/TOWER SECTIONS

TRASLANTE (FISSA SU CARRO - M 0,60)
TRAVELLING (FIXED ON CARRIAGE - M 0,60)

FISSA SENZA CARRO
FIXED WITHOUT CARRIAGE



● IN ESERCIZIO / IN SERVICE

■ FUORI ESERCIZIO / OUT OF SERVICE

F1 ● T 46 ■ T 48

F1 ● T 52 ■ T 54

F1 ● T 58 ■ T 75

F2 ● T 97 ■ T 118

F3 ● T 74 ■ T 98

~T 28

~T 32

~T 35

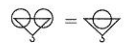
B A S
~T26 ~T30 ~T33

H AL GANCIO (SPECIALE A RICHIESTA) / HOOKS HEIGHT (SPECIAL ONE ON REQUEST)

DIAGRAMMI DI CARICO/LOAD DIAGRAMS

A 794 B5 - A5 - S5 - CITY. 5

T					2,5	2,1	1,8	1,55	1,35	1,25	
M		15	20	25	30	35	40	45	50	54	M 54
T		5	3,85	3,05	2,5						
T					2,5	2,2	1,9	1,65	1,5		
M		16	20	25	31	35	40	45	50		M 50
T		5	4,1	3,2	2,5						
T					2,5	2,2	1,9	1,6			
M		16	20	25	31	35	40	46			M 46
T		5	4,1	3,2	2,5						
T					2,5	2,25	1,95				
M		17	20	25	32	35	40				M 40
T		5	4,2	3,25	2,5						



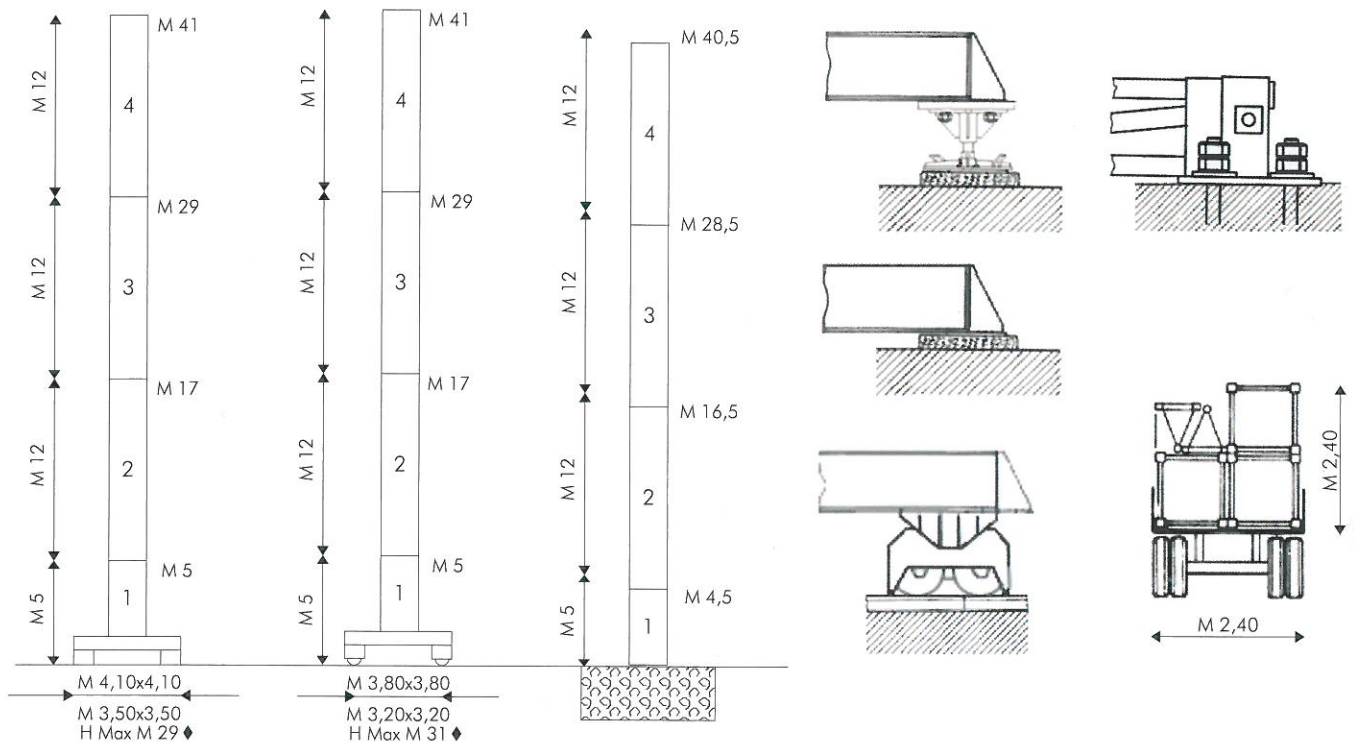
VERSIONE CITY / CITY CONFIGURATION

FISSA SU CARRO
FIXED ON CARRIAGE

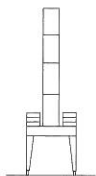
TRASLANTE
TRAVELLING

FISSA SENZA CARRO
FIXED WITHOUT CARRIAGE

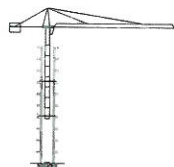
M 1,20 x 1,20 (TORRE PESANTE/HEAVY TOWER)
M 1,60 x 1,60 (TORRE LEGGERA/LIGHT TOWER) ◆



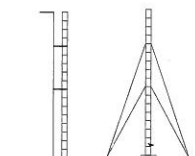
A PORTALE / PORTAL



RAMPANTE / CLIMBING



ANCORATA / ANCHORED



MECCANISMI/MECHANISMS A 794 B5 - A5 - S5 - CITY. 5

	HP	M/1'		HP	M/1'		T
	3,5 ♦(SECAS III)	0 ▶ 60 (MICRO 0 - 5)		20/20/5 (194 - 3VS)	I	5	2,5
	2 X 3,5 (SECAS III)	0 ▶ 0,8 (MICRO 0 - 0,1) (G/1'-REV/1')			II	25	2,5
					III	50	1,5
					I	2,5	5
	2 x 5,5 (SECAS III)	0 ▶ 25 (MICRO 0 - 3)			II	12,5	5
					III	25	3
			20 ♦(MULTILIFT)	0 ▶ 60 4/8/20 50/60	I	2,5/2,5/2,5 1,25/1	
	0 ▶ 30 2/4/10 25/30	5/5/5 2,5/2					

ALIMENTAZIONE/POWER SUPPLY	V	400/50HZ	RADIOCOMANDO/RADIOCONTROL
ASSORBIMENTO/MAINS SUPPLY	KW	32/20♦	SET MONTAGGIO/ERECTION SET ♦
CABINA PENSILE/SLEWING CAB		♦	TIRO IN QUARTA/FOUR FALLS REEVING ♦
CONTRAPPESO/COUNTERWEIGHT	~T	20,4	ZAVORRA BASE/BASE BALLAST ~T 27▶88♦

dati non impegnativi e modifiche riservate / subject to modifications

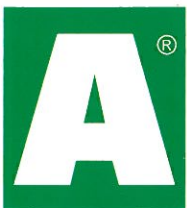
a richiesta / on request ♦

CARATTERISTICHE PRINCIPALI

STRUTTURE IN ACCIAIO FE 510C A NORME DIN • ACCOPPIAMENTI SPINATI, SEDI ALESATE • PERNERIA, FUNI, PIATTAFORME, SCALE E PASSERELLE AEREE ZINCATE • RUOTISMI SU CUSCINETTI E RIDUTTORI EPICICLOIDALI IN PRESA DIRETTA • RALLA PRECARICATA E TRATTATA TERMICAMENTE, CON LUBRIFICAZIONE CENTRALIZZATA (ALFALUB) • ROTAZIONE ELETTRONICA A REGOLAZIONE CONTINUA DI VELOCITA' (SECAS III) • DISTRIBUZIONE ELETTRONICA A REGOLAZIONE CONTINUA DI VELOCITA' (SECAS III) • TRASLAZIONE ELETTRONICA A REGOLAZIONE CONTINUA DI VELOCITA' (SECAS III) • RUOTE DI TRASLAZIONE IN ACCIAIO FUCINATO, TRATTATE TERMICAMENTE • PIATTAFORMA GIREVOLE, CON I PRINCIPALI GRUPPI ELETTROMECCANICI A BORDO • TIRO IN QUARTA • CABINA PENSILE ROTANTE • ARMADIO ELETTRICO IN ACCIAIO INOX A NORME CEI • VERNICIATURA AD IMMERSIONE CON DOPPIA MANO DI SMALTO AL CROMO-ZINCO (DEPAS) • DISPOSITIVI DI SICUREZZA SECONDO LA DIRETTIVA MACCHINE EUROPEA "CE".

MAIN FEATURES

ST 510C STEEL STRUCTURES CONFORM TO DIN RULES • PINED CONNECTIONS, BORED SEATS • GALVANIZED PINS, ROPES, PLATFORMS, LADDERS AND FOOTPATHES • DRIVING MECHANISMS ON BEARINGS AND DIRECT DRIVE PLANETARY GEARS • PRELOADED AND HEAT TREATED SLEWING RING WITH CENTRALISED LUBRICATION (ALFALUB) • ELECTRONIC SLEWING WITH CONTINUOUS SPEED ADJUSTMENT (SECAS III) • ELECTRONIC TROLLEY WINCH WITH CONTINUOUS SPEED ADJUSTMENT (SECAS III) • ELECTRONIC TRAVELLING WITH CONTINUOUS SPEED ADJUSTMENT (SECAS III) • FORGED STEEL TRAVELLING WHEELS HEAT TREATED • SLEWING PLATFORM WITH MAIN ELECTRO-MECHANICAL GROUPS ON BOARD • FOUR FALLS REEVING • SLEWING OPERATOR'S CAB • STAINLESS STEEL ELECTRICAL BOARD PANEL CONFORMS TO CEI RULES • DIPPING PAINTING WITH DOUBLE COAT OF CHROMIUM ZINC ENAMEL (DEPAS) • SAFETY DEVICES ACCORDING TO "CE" EUROPEAN MACHINE DIRECTIVE.



AGENTE/DEALER

ALFA SRL • 61015 NOVAFELTRIA (PU) • ITALY • PH. +39 0541 920096 • FAX 0541 921847
www.alfagru.it - info@alfagru.it