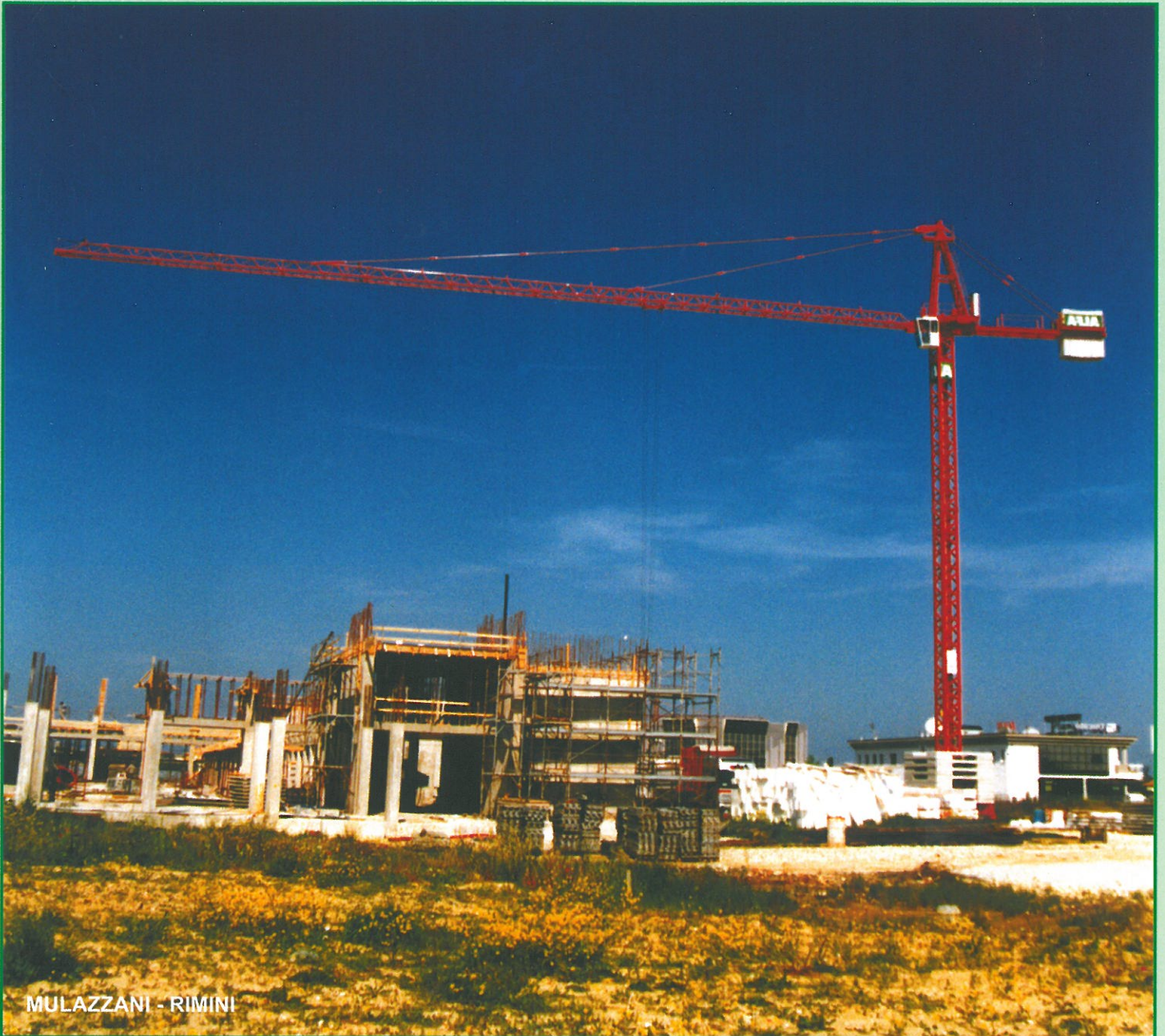




ALFA

© ALFA

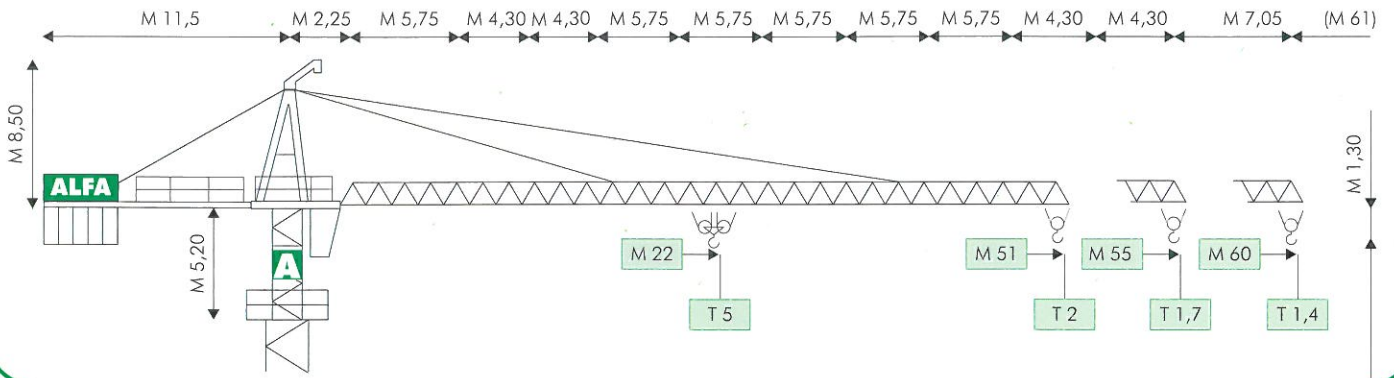
GRUPPO FINALFA



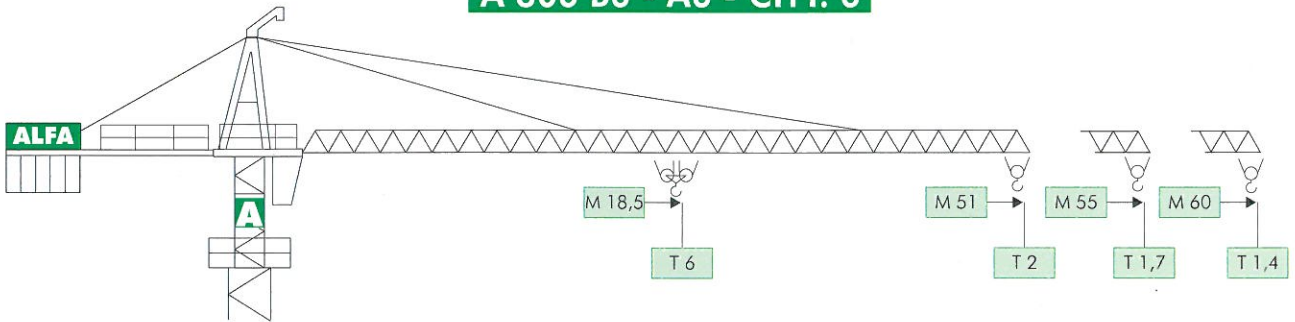
MULAZZANI - RIMINI

® HYDROMATIC A806

MODELLO/TYPE A 806 B5 - A5 - CITY. 5



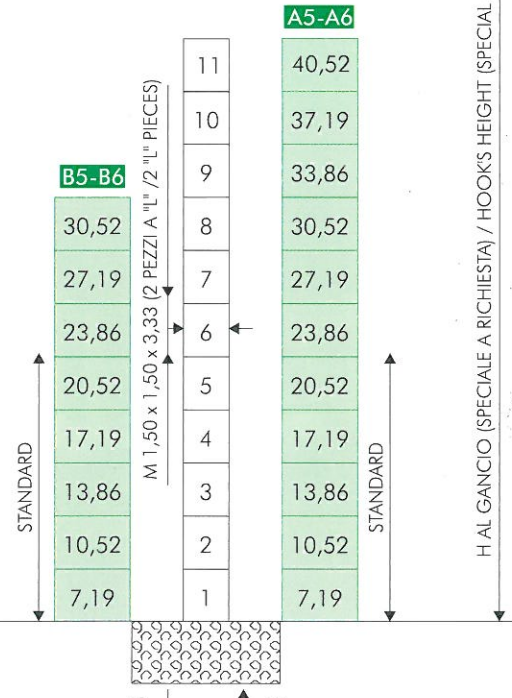
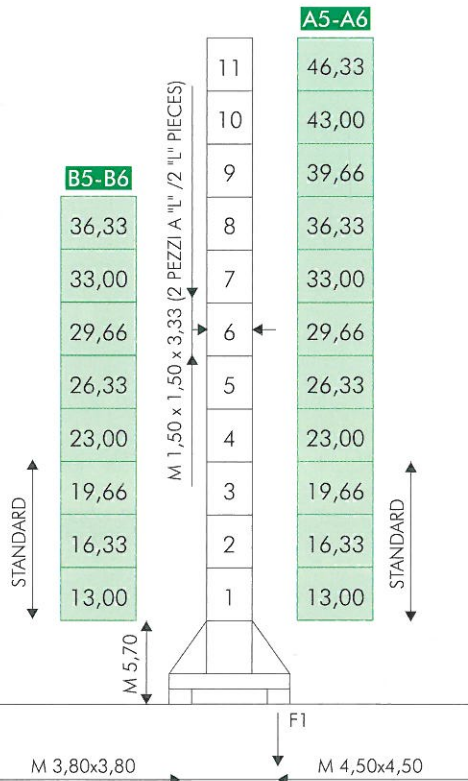
A 806 B6 - A6 - CITY. 6



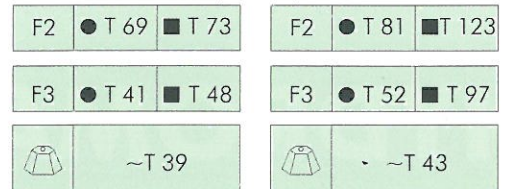
COMPOSIZIONE TORRE/TOWER SECTIONS

TRANSLANTE (FISSA SU CARRO - M 0,60)
TRAVELLING (FIXED ON CARRIAGE - M 0,60)

FISSA SENZA CARRO
FIXED WITHOUT CARRIAGE



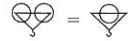
H AL GANCIO (SPECIALE A RICHIESTA) / HOOK'S HEIGHT (SPECIAL ONE ON REQUEST)



DIAGRAMMI DI CARICO/LOAD DIAGRAMS

A 806 B5 - A5 - CITY. 5

T					2,5	2,3	2	1,8	1,4	
M	19	25	30	36	37	40	45	50	60	M 60
T	5	3,8	3,1	2,5						
T					2,5	2,1	1,9	1,7		
M	21	25	30	38	39	45	50	55		M 55
T	5	4,3	3,5	2,5						
T				2,5	2,4	2,3	2			
M	22	25	40	41	42	45	51			M 51
T	5	4,4	2,5							



A 806 B6 - A6 - CITY. 6

T					3	2,3	2	1,8	1,4	
M	16	20	25	30	31	40	45	50	60	M 60
T	6	4,8	3,8	3						
T					3	2,1	1,9	1,7		
M	17,5	20	25	32	33	45	50	55		M 55
T	6	5,4	4,1	3						
T				3	2,4	2,3	2			
M	18,5	25	34	35	42	45	51			M 51
T	6	4,3	3							

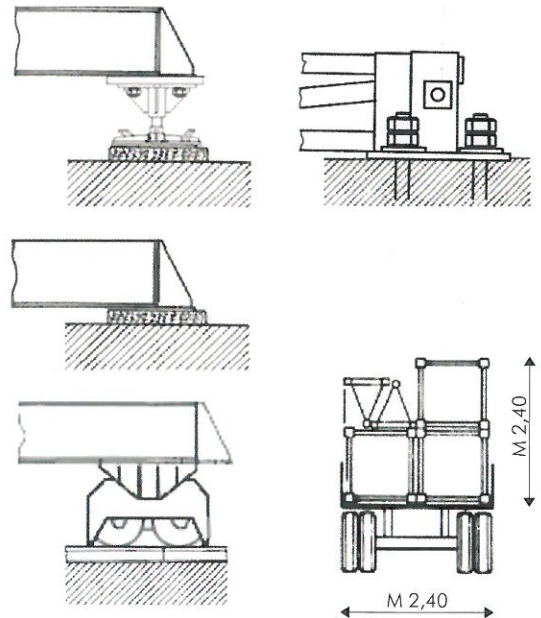
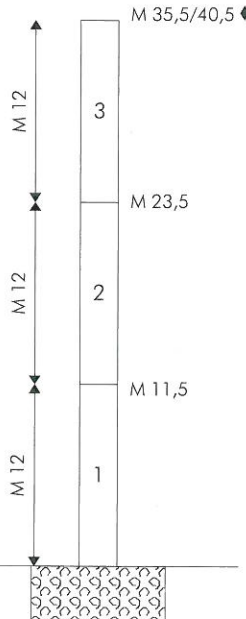
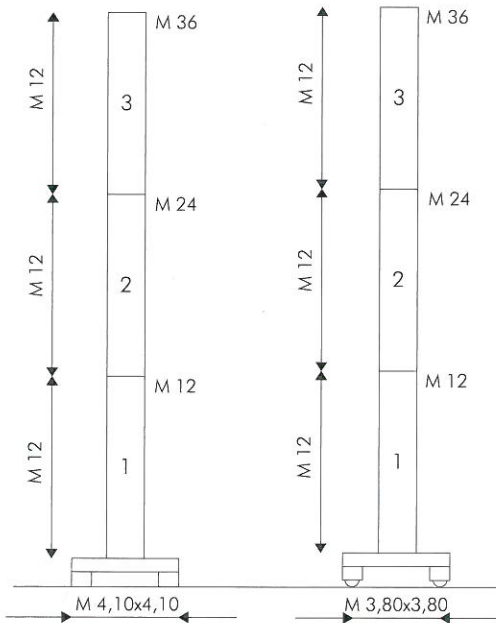
VERSIONE CITY / CITY CONFIGURATION

FISSA SU CARRO
FIXED ON CARRIAGE

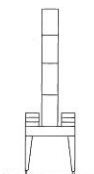
TRASLANTE
TRAVELLING

FISSA SENZA CARRO
FIXED WITHOUT CARRIAGE

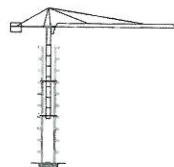
M 1,20 x 1,20 (TORRE PESANTE/HEAVY TOWER)
M 1,60 x 1,60 (TORRE LEGGERA/LIGHT TOWER) ◆



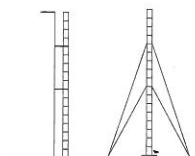
A PORTALE / PORTAL



RAMPANTE / CLIMBING



ANCORATA / ANCHORED



MECCANISMI/MECHANISMS A 806 B5 - A5 - CITY5

	HP		M/1'			HP		M/1'		T
	3,5 (SECAS III)	0 ▶ 60 (MICRO 0 - 5)			20/20/5 (194 3VS)	I	5	2,5		
	2 x 4/4 (SECAS III)	0 ▶ 0,4/0 ▶ 0,8 (MICRO 0 - 0,1) (G/1'-REV/1')					II	25	2,5	
	2 x 6,5 (SECAS III)	0 ▶ 25 (MICRO 0 - 3)					III	50	1,4	
					20 ♦ (MULTILIFT)	I	0 ▶ 60 4/8/20 40/60		2,5/2,5/2,5 1,5/1	
							II	0 ▶ 30 2/4/10 20/30		5/5/5 3/2

A806 B6 - A6 - CITY6

	HP		M/1'			HP		M/1'		T
	3,5 (SECAS III)	0 ▶ 60 (MICRO 0 - 5)			20/20/6 (208 3VS)	I	5	3		
	2 x 4/4 (SECAS III)	0 ▶ 0,4/0 ▶ 0,8 (MICRO 0 - 0,1) (G/1'-REV/1')					II	30	3	
	2 x 6,5 (SECAS III)	0 ▶ 25 (MICRO 0 - 3)					III	60	1,5	
					25 ♦ (MULTILIFT)	I	0 ▶ 70 3/10/30 50/70		3/3/3 1,5/1,2	
							II	0 ▶ 35 1,5/5/15 25/35		6/6/6 3/2,4

ALIMENTAZIONE/POWER SUPPLY	V	400/50HZ	RADIOCOMANDO/RADIOCONTROL
ASSORBIMENTO/MAINS SUPPLY	KW 32 / 20♦ - 48 / 25♦		SET MONTAGGIO/ERECTION SET ♦
CABINA ROTANTE/SLEWING CAB	♦		TIRO IN QUARTA/FOUR FALLS REEVING ♦
CONTRAPPESO/COUNTERWEIGHT	~T	21,5	ZAVORRA BASE/BASE BALLAST ~T 43▶87 ♦

dati non impegnativi e modifiche riservate / subject to modifications

a richiesta / on request ♦

CARATTERISTICHE PRINCIPALI

STRUTTURE IN ACCIAIO FE 510C A NORME DIN • ACCOPPIAMENTI SPINATI, SEDI ALESATE • PERNERIA, FUNI, PIATTAFORME, SCALE E PASSERELLE AEREE ZINCATE • RUOTISMI SU CUSCINETTI E RIDUTTORI EPICICLOIDALI IN PRESA DIRETTA • RALLA PRECARICATA E TRATTATA TERMICAMENTE, CON LUBRIFICAZIONE CENTRALIZZATA (ALFALUB) • ROTAZIONE ELETTRONICA A REGOLAZIONE CONTINUA DI VELOCITA' (SECAS III) • DISTRIBUZIONE ELETTRONICA A REGOLAZIONE CONTINUA DI VELOCITA' (SECAS III) • TRASLAZIONE ELETTRONICA A REGOLAZIONE CONTINUA DI VELOCITA' (SECAS III) • RUOTE DI TRASLAZIONE IN ACCIAIO FUCINATO, TRATTATE TERMICAMENTE • PIATTAFORMA GIREVOLE, CON I PRINCIPALI GRUPPI ELETTROMECCANICI A BORDO • TIRO IN QUARTA • CABINA PENSILE ROTANTE • ARMADIO ELETTRICO IN ACCIAIO INOX A NORME CEI • VERNICIATURA AD IMMERSIONE CON DOPPIA MANO DI SMALTO AL CROMO-ZINCO (DEPAS) • DISPOSITIVI DI SICUREZZA SECONDO LA DIRETTIVA MACCHINE EUROPEA "CE".

MAIN FEATURES

ST 510C STEEL STRUCTURES CONFORM TO DIN RULES • PINED CONNECTIONS, BORED SEATS • GALVANIZED PINS, ROPES, PLATFORMS, LADDERS AND FOOTPATHES • DRIVING MECHANISMS ON BEARINGS AND DIRECT DRIVE PLANETARY GEARS • PRELOADED AND HEAT TREATED SLEWING RING WITH CENTRALISED LUBRICATION (ALFALUB) • ELECTRONIC SLEWING WITH CONTINUOUS SPEED ADJUSTMENT (SECAS III) • ELECTRONIC TROLLEY WINCH WITH CONTINUOUS SPEED ADJUSTMENT (SECAS III) • ELECTRONIC TRAVELLING WITH CONTINUOUS SPEED ADJUSTMENT (SECAS III) • FORGED STEEL TRAVELLING WHEELS HEAT TREATED • SLEWING PLATFORM WITH MAIN ELECTRO-MECHANICAL GROUPS ON BOARD • FOUR FALLS REEVING • SLEWING OPERATOR'S CAB • STAINLESS STEEL ELECTRICAL BOARD PANEL CONFORMS TO CEI RULES • DIPPING PAINTING WITH DOUBLE COAT OF CHROMIUM ZINC ENAMEL (DEPAS) • SAFETY DEVICES ACCORDING TO "CE" EUROPEAN MACHINE DIRECTIVE.

AGENTE/DEALER

