



ALFA

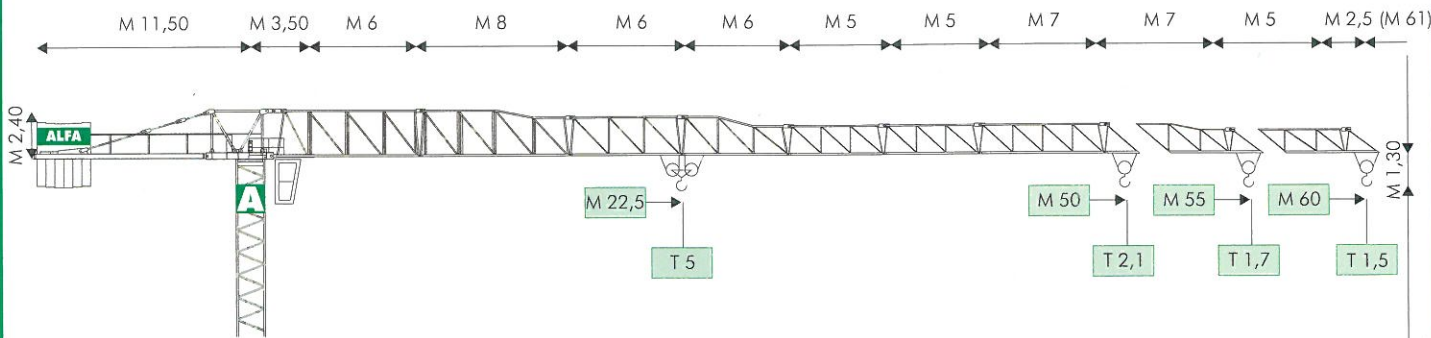
© ALFA

GRUPPO FINALFA

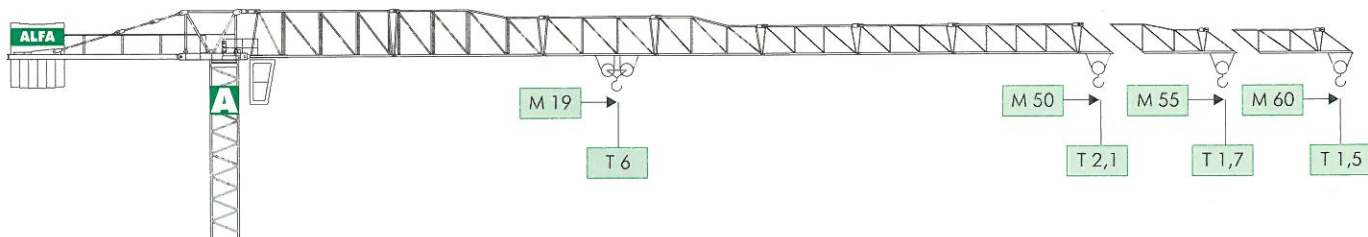


® HYDROMATIC A807

MODELLO/TYPE A 807 B5 - A5 - CITY. 5



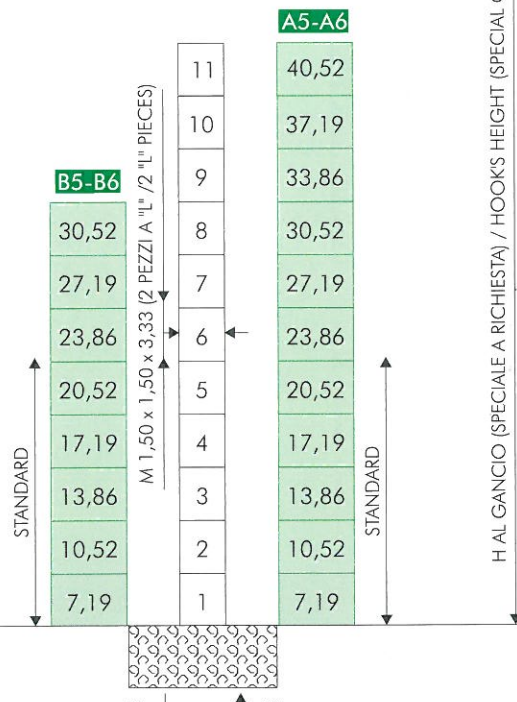
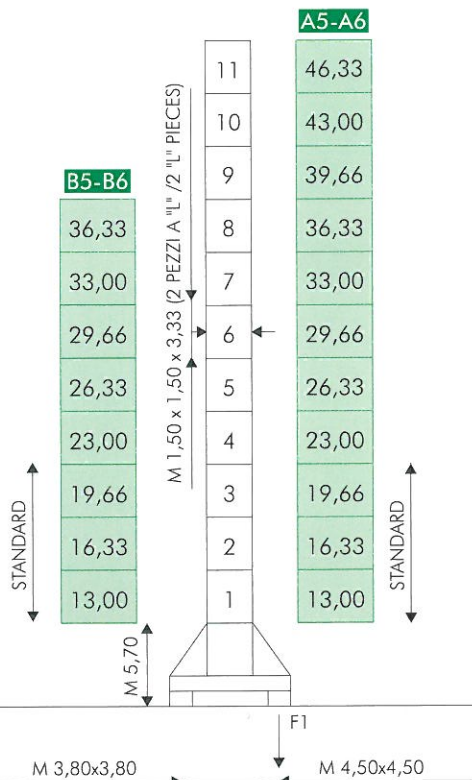
A 807 B6 - A6 - CITY. 6



COMPOSIZIONE TORRE/TOWER SECTIONS

TRANSLANTE (FISSA SU CARRO - M 0,60)
TRAVELLING (FIXED ON CARRIAGE - M 0,60)

FISSA SENZA CARRO
FIXED WITHOUT CARRIAGE



● IN ESERCIZIO / IN SERVICE
■ FUORI ESERCIZIO / OUT OF SERVICE

F1 ● T 65 ■ T 68	F1 ● T 75 ■ T 89
~T 42	~T 46

F2 ● T 69 ■ T 73	F2 ● T 81 ■ T 123
F3 ● T 41 ■ T 48	F3 ● T 52 ■ T 97
~T 39	~T 43

H AL GANCIO (SPECIALE A RICHIESTA) / HOOK'S HEIGHT (SPECIAL ONE ON REQUEST)

DIAGRAMMI DI CARICO/LOAD DIAGRAMS

A 807 B5 - A5 - CITY. 5

T					2,5	2,4	2,1	1,8	1,5		
M		20	25	30	35	38	40	45	50	60	M 60
T		5	4	3,3	2,7	2,5					
T						2,5	2,15	1,9	1,7		
M		21	25	30	35	39	45	50	55		M 55
T		5	4,1	3,4	2,8	2,5					
T						2,5	2,3	2,1			
M		22,5	25	30	35	42	45	50			M 50
T		5	4,5	3,7	3,1	2,5					



A 807 B6 - A6 - CITY. 6

T						3	2,4	2,1	1,8	1,5	
M		17	20	25	30	32	40	45	50	60	M 60
T		6	5	4	3,3	3					
T						3	2,15	1,9	1,7		
M		17,5	20	25	30	33	45	50	55		M 55
T		6	5,2	4,1	3,4	3					
T						3	2,5	2,3	2,1		
M		19	25	30	36	42	45	50			M 50
T		6	4,5	3,7	3						

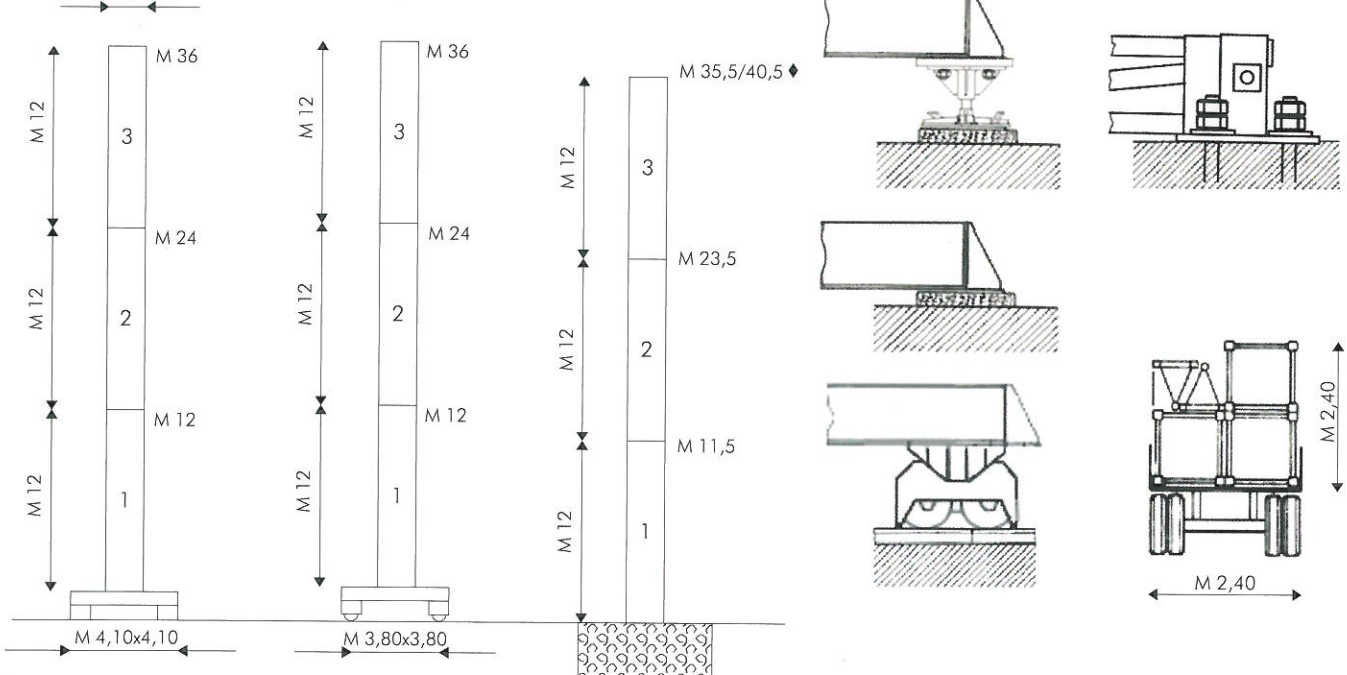
VERSIONE CITY / CITY CONFIGURATION

FISSA SU CARRO
FIXED ON CARRIAGE

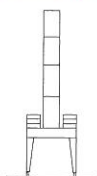
TRASLANTE
TRAVELLING

FISSA SENZA CARRO
FIXED WITHOUT CARRIAGE

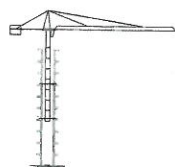
M 1,20 x 1,20 (TORRE PESANTE/HEAVY TOWER)
M 1,60 x 1,60 (TORRE LEGGERA/LIGHT TOWER) ◆



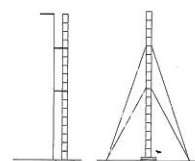
A PORTALE / PORTAL



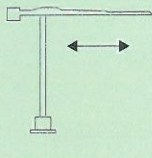
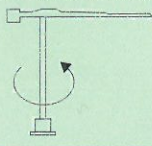
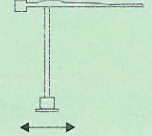
RAMPANTE / CLIMBING



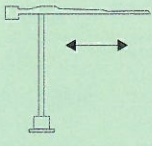
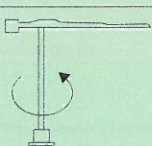
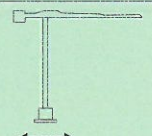
ANCORATA / ANCHORED



MECCANISMI/MECHANISMS A 807 B5 - A5 - CITY5

	HP		M/1'			HP		M/1'		T			
		3,5 (SECAS III)	0 ▶ 60 (MICRO 0 - 5)	20/20/5 (194 3VS)		I	5	2,5	II	25	2,5	III	50
	2 x 4/4 (SECAS III)	0 ▶ 0,4/0 ▶ 0,8 (MICRO 0 - 0,1) (G/1'-REV/1')	20	♦	I	2,5	5	II	12,5	5	III	25	3
	2 x 6,5 (SECAS III)	0 ▶ 25 (MICRO 0 - 3)	♦ (MULTILIFT)	♦	0 ▶ 60 4/8/20 40/60		2,5/2,5/2,5 1,5/1		0 ▶ 30 2/4/10 20/30		5/5/5 3/2		

A807 B6 - A6 - CITY6

	HP		M/1'			HP		M/1'		T			
		3,5 (SECAS III)	0 ▶ 60 (MICRO 0 - 5)	25/25/6 (208 3VS)		I	5	3	II	30	3	III	60
	2 x 4/4 (SECAS III)	0 ▶ 0,4/0 ▶ 0,8 (MICRO 0 - 0,1) (G/1'-REV/1')	25	♦	I	2,5	6	II	15	6	III	30	3
	2 x 6,5 (SECAS III)	0 ▶ 25 (MICRO 0 - 3)	♦ (MULTILIFT)	♦	0 ▶ 70 3/10/30 50/70		3/3/3 1,5/1,2		0 ▶ 35 1,5/5/15 25/35		6/6/6 3/2,4		

ALIMENTAZIONE/POWER SUPPLY	V	400/50HZ	RADIOCOMANDO/RADIOCONTROL
ASSORBIMENTO/MAINS SUPPLY	KW 32 / 20♦ - 40 / 25♦		SET MONTAGGIO/ERECTION SET ♦
CABINA ROTANTE/SLEWING CAB		♦	TIRO IN QUARTA/FOUR FALLS REEVING ♦
CONTRAPPESO/COUNTERWEIGHT	~T	20	ZAVORRA BASE/BASE BALLAST ~T 43▶87 ♦

dati non impegnativi e modifiche riservate / subject to modifications

a richiesta / on request ♦

CARATTERISTICHE PRINCIPALI

STRUTTURE IN ACCIAIO FE 510C A NORME DIN • ACCOPPIAMENTI SPINATI, SEDI ALESATE • PERNERIA, FUNI, PIATTAFORME, SCALE E PASSERELLE AEREE ZINCATE • RUOTISMI SU CUSCINETTI E RIDUTTORI EPICICLOIDALI IN PRESA DIRETTA • RALLA PRECARICATA E TRATTATA TERMICAMENTE, CON LUBRIFICAZIONE CENTRALIZZATA (ALFALUB) • ROTAZIONE ELETTRONICA A REGOLAZIONE CONTINUA DI VELOCITA' (SECAS III) • DISTRIBUZIONE ELETTRONICA A REGOLAZIONE CONTINUA DI VELOCITA' (SECAS III) • TRASLAZIONE ELETTRONICA A REGOLAZIONE CONTINUA DI VELOCITA' (SECAS III) • RUOTE DI TRASLAZIONE IN ACCIAIO FUCINATO, TRATTATE TERMICAMENTE • PIATTAFORMA GIREVOLE, CON I PRINCIPALI GRUPPI ELETTROMECCANICI A BORDO • TIRO IN QUARTA • CABINA PENSILE ROTANTE • ARMADIO ELETTRICO IN ACCIAIO INOX A NORME CEI • VERNICIATURA AD IMMERSIONE CON DOPPIA MANO DI SMALTO AL CROMO-ZINCO (DEPAS) • DISPOSITIVI DI SICUREZZA SECONDO LA DIRETTIVA MACCHINE EUROPEA "CE".

MAIN FEATURES

ST 510C STEEL STRUCTURES CONFORM TO DIN RULES • PINED CONNECTIONS, BORED SEATS • GALVANIZED PINS, ROPES, PLATFORMS, LADDERS AND FOOTPATHES • DRIVING MECHANISMS ON BEARINGS AND DIRECT DRIVE PLANETARY GEARS • PRELOADED AND HEAT TREATED SLEWING RING WITH CENTRALISED LUBRICATION (ALFALUB) • ELECTRONIC SLEWING WITH CONTINUOUS SPEED ADJUSTMENT (SECAS III) • ELECTRONIC TROLLEY WINCH WITH CONTINUOUS SPEED ADJUSTMENT (SECAS III) • ELECTRONIC TRAVELLING WITH CONTINUOUS SPEED ADJUSTMENT (SECAS III) • FORGED STEEL TRAVELLING WHEELS HEAT TREATED • SLEWING PLATFORM WITH MAIN ELECTRO-MECHANICAL GROUPS ON BOARD • FOUR FALLS REEVING • SLEWING OPERATOR'S CAB • STAINLESS STEEL ELECTRICAL BOARD PANEL CONFORMS TO CEI RULES • DIPPING PAINTING WITH DOUBLE COAT OF CHROMIUM ZINC ENAMEL (DEPAS) • SAFETY DEVICES ACCORDING TO "CE" EUROPEAN MACHINE DIRECTIVE.

AGENTE/DEALER

