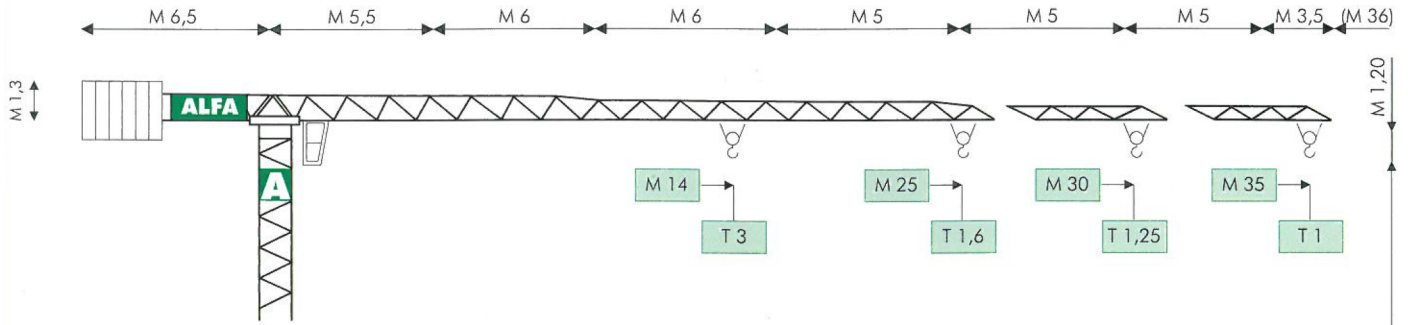




**ALFA**

**A547**

# MODELLO / TYPE A 547

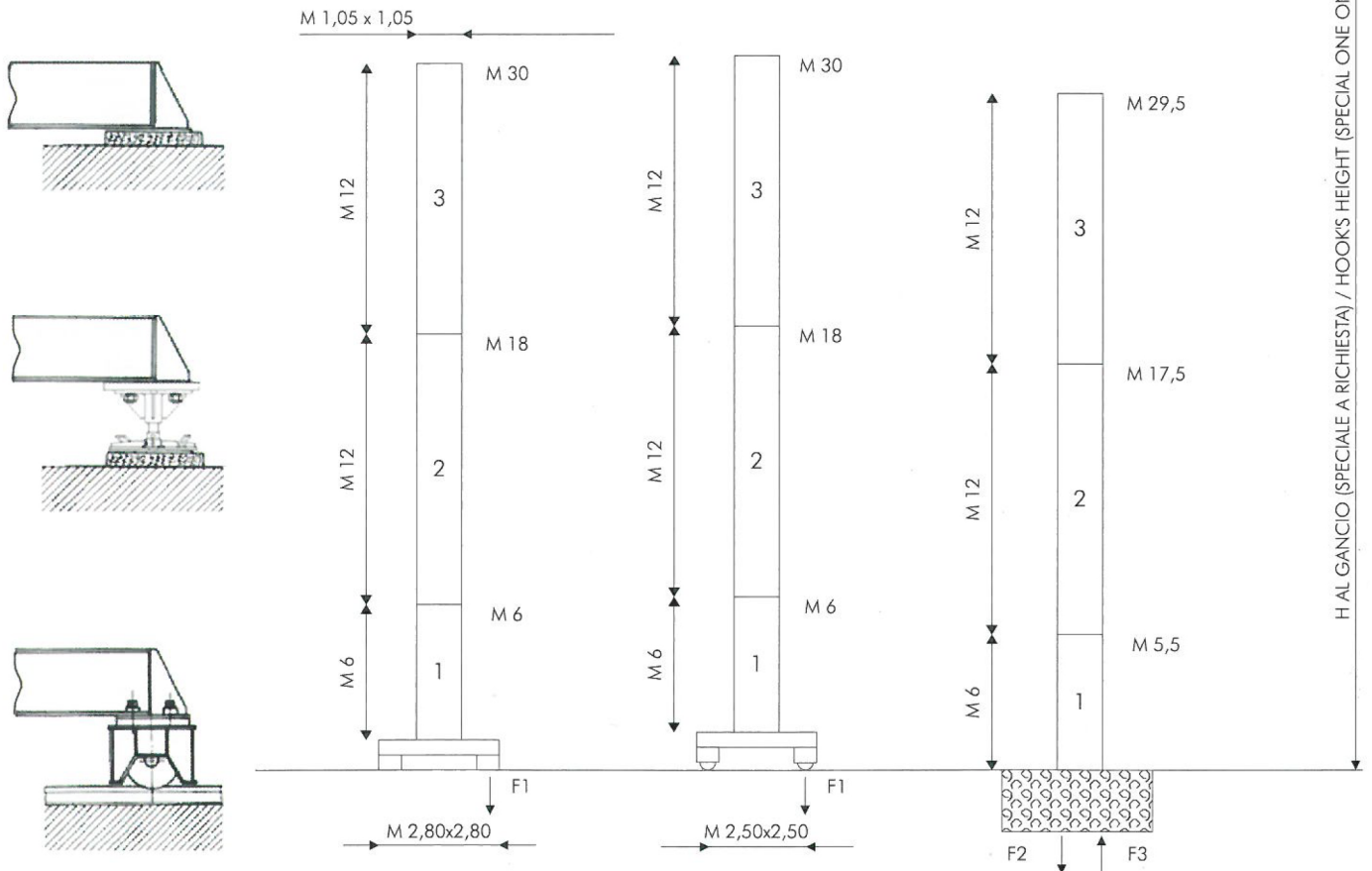


# COMPOSIZIONE TORRE / TOWER SECTIONS

FISSA SUL CARRO  
FIXED ON CARRIAGE

TRASLANTE  
TRAVELLING

FISSA SENZA CARRO  
FIXED WITHOUT CARRIAGE



● IN ESERCIZIO / IN SERVICE  
■ FUORI ESERCIZIO / OUT OF SERVICE

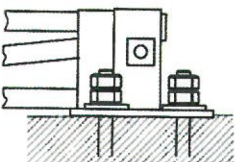
F1 ● T 35 ■ T 42

~T13

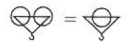
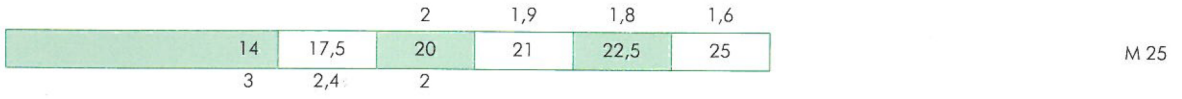
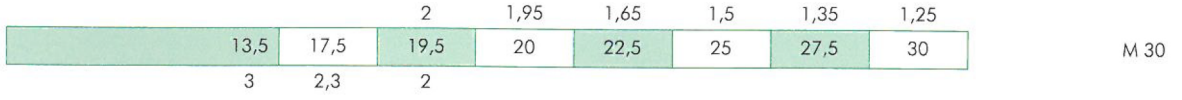
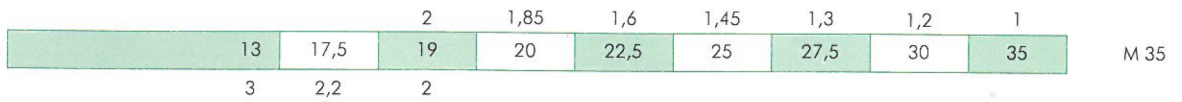
F2 ● T 40 ■ T 51

F3 ● T 29 ■ T 41

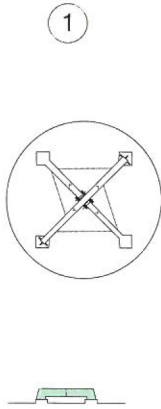
~T10,5



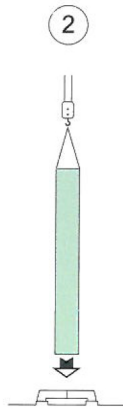
# DIAGRAMMI DI CARICO / LOAD DIAGRAMS A 547



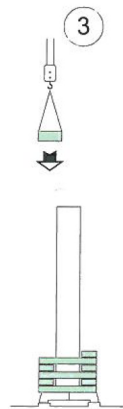
## MONTAGGIO / ERECTION



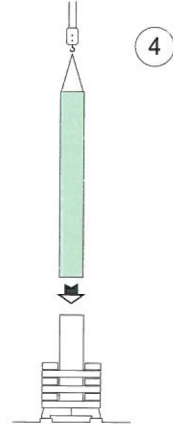
1  
ASSEMBLAGGIO BASAMENTO  
CARRIAGE ASSEMBLY



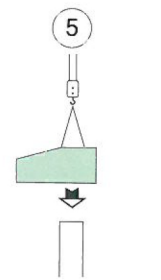
2  
MONTAGGIO PRIMO ELEMENTO  
FIRST MAST SECTION ASSEMBLY



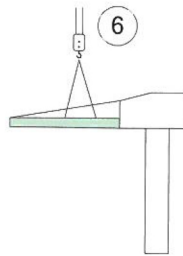
3  
CARICO ZAVORRA  
BALLAST LOADING



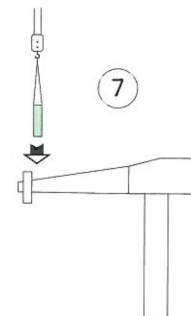
4  
MONTAGGIO EVENTUALI ALTRI ELEMENTI  
EVENTUAL OTHER MAST SECTIONS ASSEMBLY



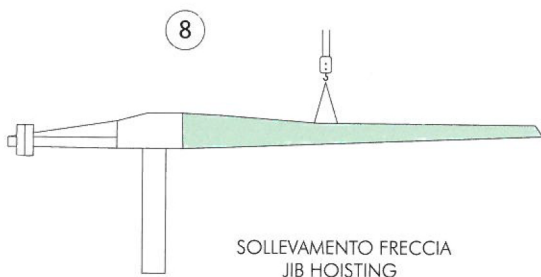
5  
MONTAGGIO ROTAZIONE  
SLEWING GROUP ASSEMBLY



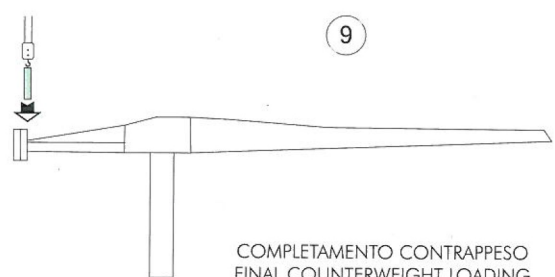
6  
MONTAGGIO CONTROFRECCIA  
COUNTERJIB ASSEMBLY



7  
CARICO PARZIALE CONTRAPPESO  
PARTIAL COUNTERWEIGHT LOADING

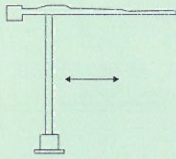
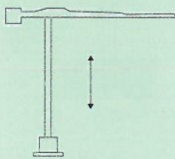
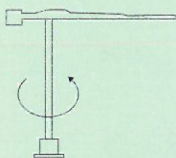


8  
SOLLEVAMENTO FRECCIA  
JIB HOISTING



9  
COMPLETAMENTO CONTRAPPESO  
FINAL COUNTERWEIGHT LOADING

## MECCANISMI / MECHANISMS A 547

	KW	M/1'		KW	M/1'	T
	4	10/20/40				
	5.5	RPM 0.9				

ALIMENTAZIONE/POWER SUPPLY	V	400/50HZ	
ASSORBIMENTO/MAINS SUPPLY	KW	15	RADIOCOMANDO/RADIOCONTROL
CABINA PENSILE/SLEWING CAB		♦	TIRO IN QUARTA/FOUR FALLS REEVING ♦
CONTRAPPESO/COUNTERWEIGHT	~T	13,7	ZAVORRA BASE/BASE BALLAST ~T 18▶58 ♦

dati non impegnativi e modifiche riservate / subject to modifications

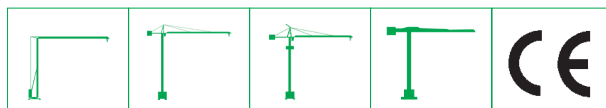
a richiesta / on request ♦

## CARATTERISTICHE PRINCIPALI

STRUTTURE IN ACCIAIO FE 510C A NORME DIN • ACCOPPIAMENTI SPINATI, SEDI ALESATE • PERNERIA, FUNI, PIATTAFORME, SCALE E PASSERELLE AEREE ZINCATE • RUOTISMI SU CUSCINETTI E RIDUTTORI EPICICLOIDALI IN PRESA DIRETTA • RALLA PRECARICATA E TRATTATA TERMICAMENTE, CON LUBRIFICAZIONE CENTRALIZZATA (ALFALUB) • ROTAZIONE ELETTRONICA A REGOLAZIONE CONTINUA DI VELOCITA' (SECAS III) • DISTRIBUZIONE A DUE VELOCITA', O SU RICHIESTA, A REGOLAZIONE CONTINUA DI VELOCITA' (SECAS III) • TRASLAZIONE ELETTRONICA A REGOLAZIONE CONTINUA DI VELOCITA' (SECAS III) • RUOTE DI TRASLAZIONE IN ACCIAIO FUCINATO, TRATTATE TERMICAMENTE • PIATTAFORMA GIREVOLE, CON I PRINCIPALI GRUPPI ELETTROMECCANICI A BORDO • TIRO IN QUARTA • CABINA PENSILE ROTANTE • ARMADIO ELETTRICO IN ACCIAIO INOX A NORME CEI • VERNICIATURA AD IMMERSIONE CON DOPPIA MANO DI SMALTO AL CROMO-ZINCO (DEPAS) • DISPOSITIVI DI SICUREZZA SECONDO LA DIRETTIVA MACCHINE EUROPEA "CE".

## MAIN FEATURES

ST 510C STEEL STRUCTURES CONFORM TO DIN RULES • PINED CONNECTIONS, BORED SEATS • GALVANIZED PINS, ROPES, PLATFORMS, LADDERS AND FOOTPATHES • DRIVING MECHANISMS ON BEARINGS AND DIRECT DRIVE PLANETARY GEARS • PRELOADED AND HEAT TREATED SLEWING RING WITH CENTRALISED LUBRICATION (ALFALUB) • ELECTRONIC SLEWING WITH CONTINUOUS SPEED ADJUSTMENT (SECAS III) • TWO-SPEED TROLLEY WINCH OR, ON REQUEST, WITH CONTINUOUS SPEED ADJUSTMENT (SECAS III) • ELECTRONIC TRAVELLING WITH CONTINUOUS SPEED ADJUSTMENT (SECAS III) • FORGED STEEL TRAVELLING WHEELS HEAT TREATED • SLEWING PLATFORM WITH MAIN ELECTRO-MECHANICAL GROUPS ON BOARD • FOUR FALLS REEVING • SLEWING OPERATOR'S CAB • STAINLESS STEEL ELECTRICAL BOARD PANEL CONFORMS TO CEI RULES • DIPPING PAINTING WITH DOUBLE COAT OF CHROMIUM ZINC ENAMEL (DEPAS) • SAFETY DEVICES ACCORDING TO "CE" EUROPEAN MACHINE DIRECTIVE.



**ALFA GRU srl**  
Via Pian di Vico 21/23  
47863 Novafeltria (RN) - Tel. 0541 1480374  
info@alfagru.com - www.alfagru.com

AGENTE / DEALER