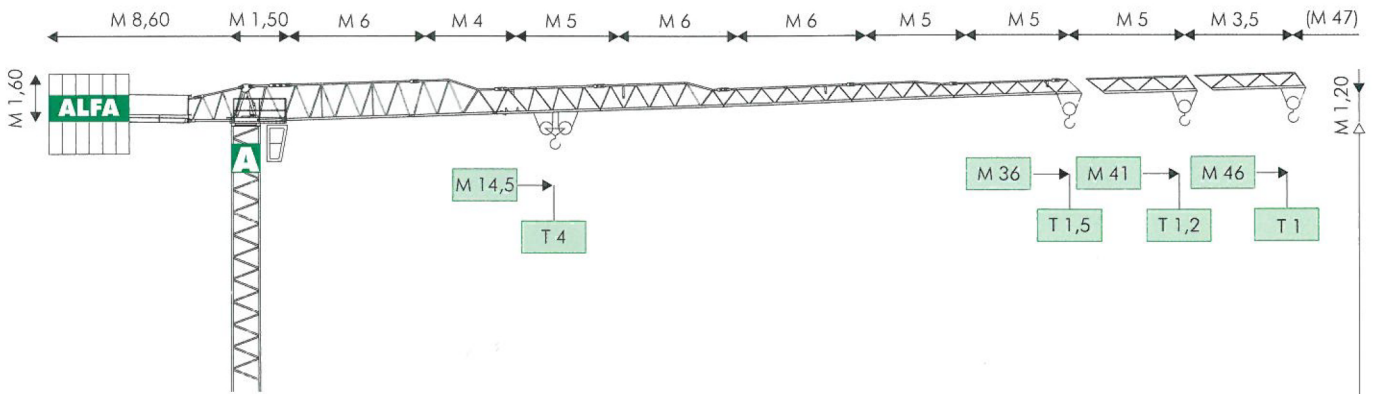




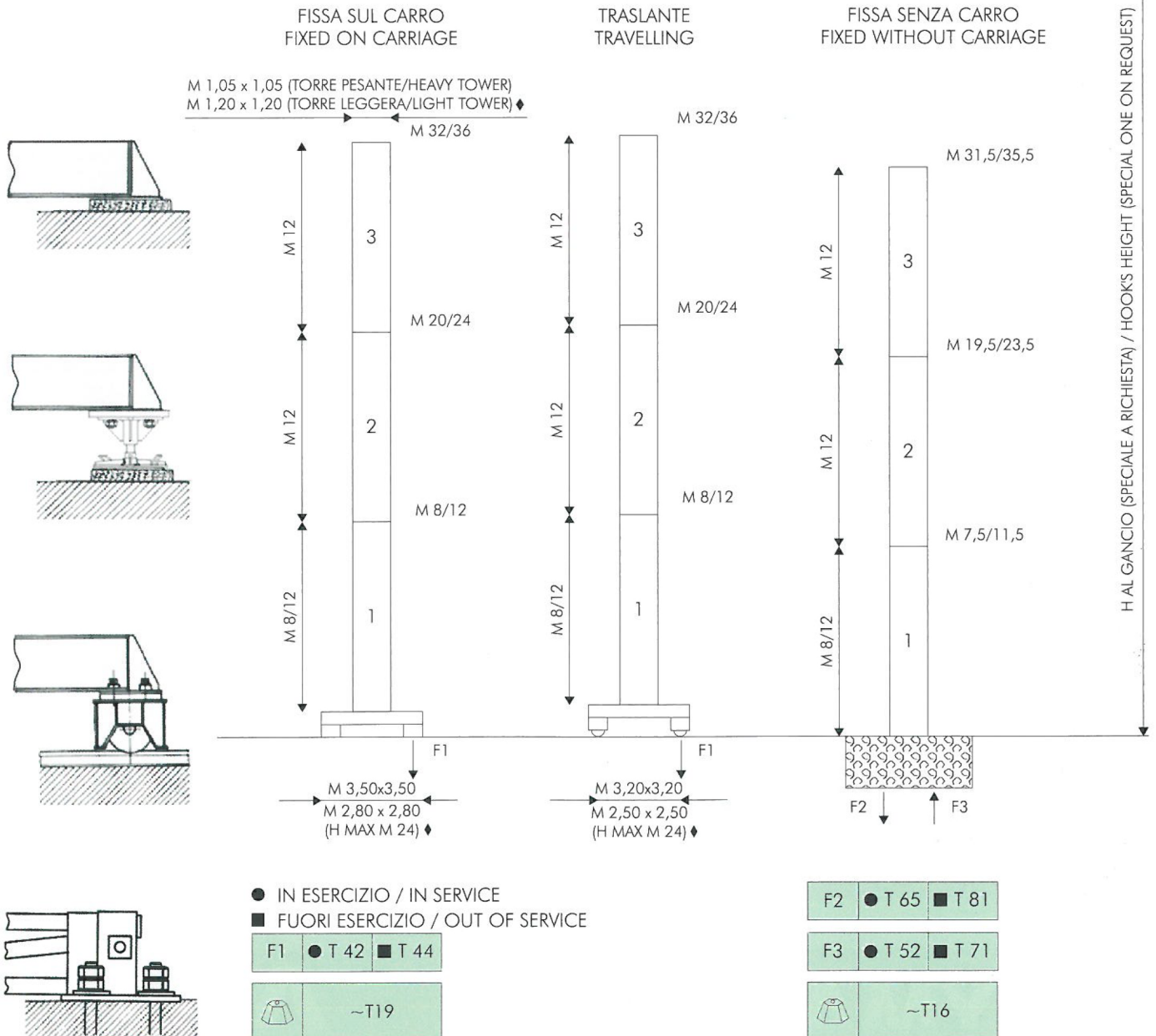
**ALFA**

**A664**

# MODELLO / TYPE A 664





## COMPOSIZIONE TORRE / TOWER SECTIONS



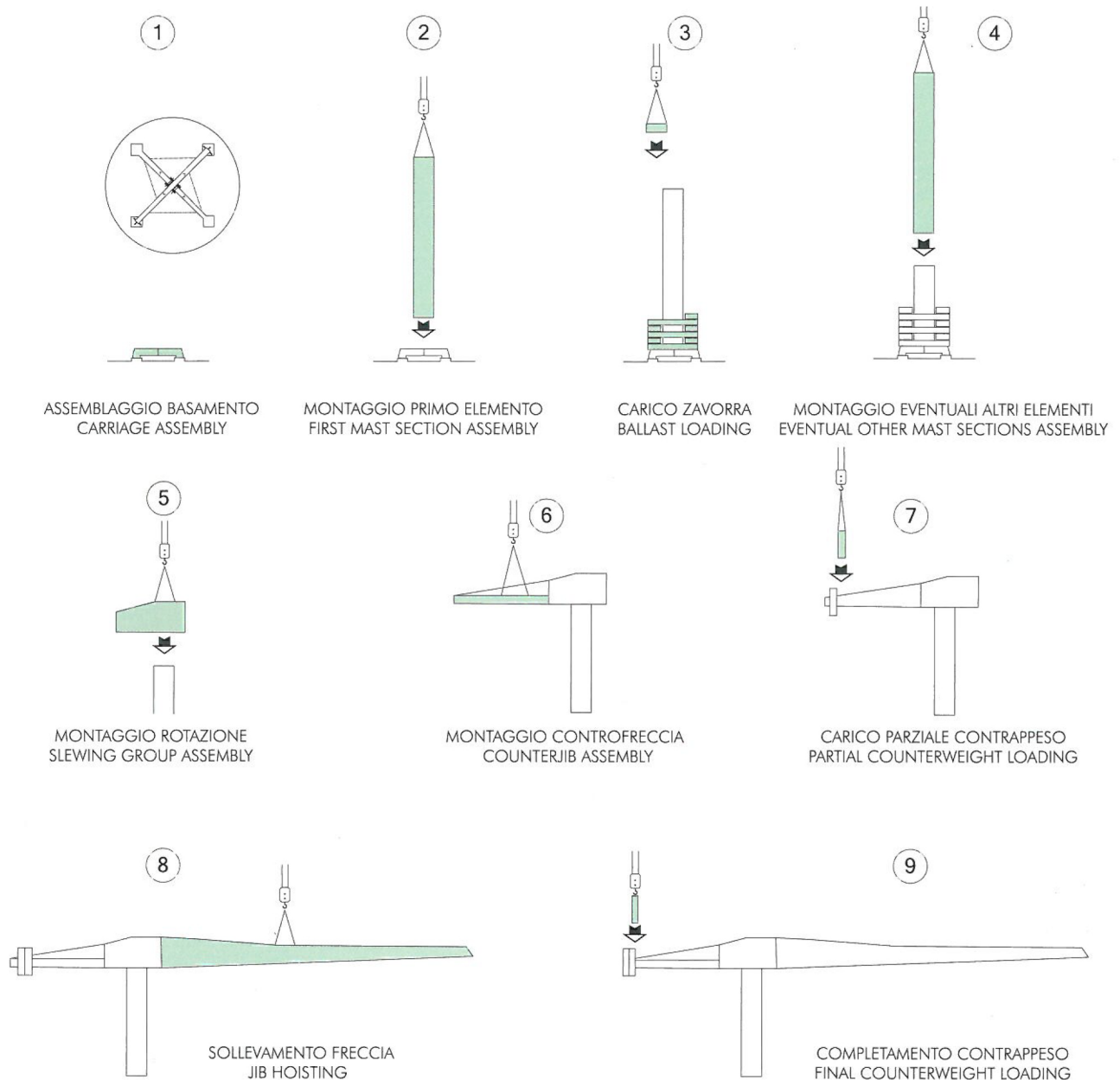
# DIAGRAMMI DI CARICO / LOAD DIAGRAMS

## A 664

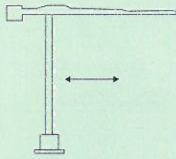
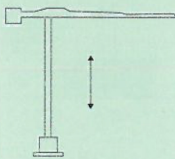
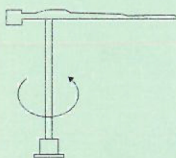
T				2,5	2	1,6	1,35	1,2	1	
M	13	15	20	25	30	35	40	46		M 46
T	4	3,4	2,5							
T			2,5	2,1	1,7	1,45	1,2			
M	13,5	17	21	25	30	35	41			M 41
T	4	3,2	2,5							
T			2,5	2,25	1,85	1,5				
M	14,5	18	23	25	30	36				M 36
T	4	3,2	2,5							

 = 

## MONTAGGIO / ERECTION



## MECCANISMI / MECHANISMS A 664

	KW	M/1'		KW	M/1'	T
	4	10/20/40				
	5.5	RPM 0.9				

ALIMENTAZIONE/POWER SUPPLY	V	400/50HZ	
ASSORBIMENTO/MAINS SUPPLY	KW	18	RADIOCOMANDO/RADIOCONTROL
CABINA PENSILE/SLEWING CAB		♦	TIRO IN QUARTA/FOUR FALLS REEVING ♦
CONTRAPPESO/COUNTERWEIGHT	~T	13,7	ZAVORRA BASE/BASE BALLAST ~T 18▶58 ♦

dati non impegnativi e modifiche riservate / subject to modifications

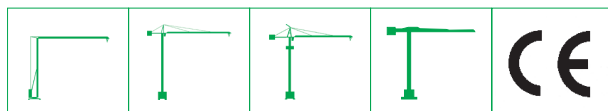
a richiesta / on request ♦

## CARATTERISTICHE PRINCIPALI

STRUTTURE IN ACCIAIO FE 510C A NORME DIN • ACCOPPIAMENTI SPINATI, SEDI ALESATE • PERNERIA, FUNI, PIATTAFORME, SCALE E PASSERELLE AEREE ZINCATE • RUOTISMI SU CUSCINETTI E RIDUTTORI EPICICLOIDALI IN PRESA DIRETTA • RALLA PRECARICATA E TRATTATA TERMICAMENTE, CON LUBRIFICAZIONE CENTRALIZZATA (ALFALUB) • ROTAZIONE ELETTRONICA A REGOLAZIONE CONTINUA DI VELOCITA' (SECAS III) • DISTRIBUZIONE A DUE VELOCITA', O SU RICHIESTA, A REGOLAZIONE CONTINUA DI VELOCITA' (SECAS III) • TRASLAZIONE ELETTRONICA A REGOLAZIONE CONTINUA DI VELOCITA' (SECAS III) • RUOTE DI TRASLAZIONE IN ACCIAIO FUCINATO, TRATTATE TERMICAMENTE • PIATTAFORMA GIREVOLE, CON I PRINCIPALI GRUPPI ELETTROMECCANICI A BORDO • TIRO IN QUARTA • CABINA PENSILE ROTANTE • ARMADIO ELETTRICO IN ACCIAIO INOX A NORME CEI • VERNICIATURA AD IMMERSIONE CON DOPPIA MANO DI SMALTO AL CROMO-ZINCO (DEPAS) • DISPOSITIVI DI SICUREZZA SECONDO LA DIRETTIVA MACCHINE EUROPEA "CE".

## MAIN FEATURES

ST 510C STEEL STRUCTURES CONFORM TO DIN RULES • PINED CONNECTIONS, BORED SEATS • GALVANIZED PINS, ROPES, PLATFORMS, LADDERS AND FOOTPATHES • DRIVING MECHANISMS ON BEARINGS AND DIRECT DRIVE PLANETARY GEARS • PRELOADED AND HEAT TREATED SLEWING RING WITH CENTRALISED LUBRICATION (ALFALUB) • ELECTRONIC SLEWING WITH CONTINUOUS SPEED ADJUSTMENT (SECAS III) • TWO-SPEED TROLLEY WINCH OR, ON REQUEST, WITH CONTINUOUS SPEED ADJUSTMENT (SECAS III) • ELECTRONIC TRAVELLING WITH CONTINUOUS SPEED ADJUSTMENT (SECAS III) • FORGED STEEL TRAVELLING WHEELS HEAT TREATED • SLEWING PLATFORM WITH MAIN ELECTRO-MECHANICAL GROUPS ON BOARD • FOUR FALLS REEVING • SLEWING OPERATOR'S CAB • STAINLESS STEEL ELECTRICAL BOARD PANEL CONFORMS TO CEI RULES • DIPPING PAINTING WITH DOUBLE COAT OF CHROMIUM ZINC ENAMEL (DEPAS) • SAFETY DEVICES ACCORDING TO "CE" EUROPEAN MACHINE DIRECTIVE.



**ALFA GRU srl**  
Via Pian di Vico 21/23  
47863 Novafeltria (RN) - Tel. 0541 1480374  
info@alfagru.com - www.alfagru.com

AGENTE / DEALER