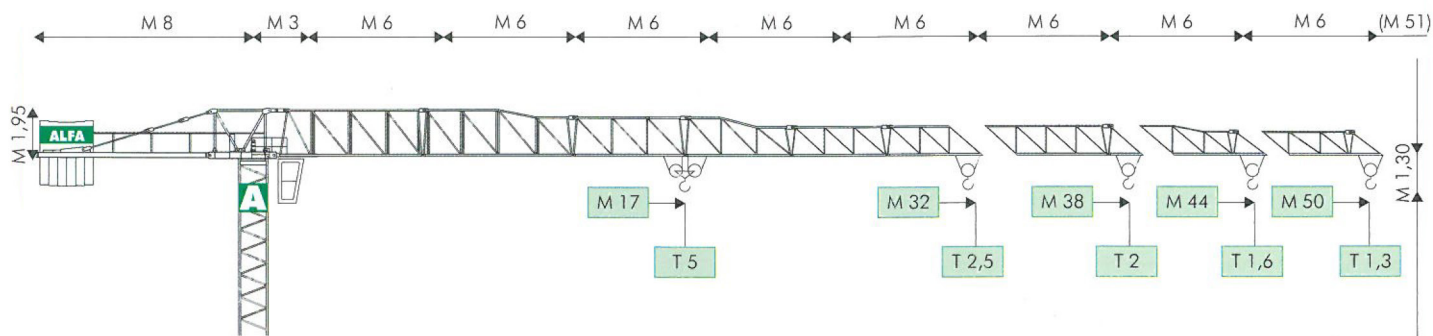




ALFA

A696

MODELLO / TYPE A 696 B5 - A5 - S5 - CITY 5



COMPOSIZIONE TORRE / TOWER SECTIONS

TRASLANTE (FISSA SU CARRO - M 0,60)
TRAVELLING (FIXED ON CARRIAGE - M 0,60)

FISSA SENZA CARRO
FIXED WITHOUT CARRIAGE



● IN ESERCIZIO / IN SERVICE

■ FUORI ESERCIZIO / OUT OF SERVICE

F1 ● T 43 ■ T 45

F1 ● T 49 ■ T 58

F1 ● T 59 ■ T 69

~T 26

~T 29

~T 32

F2 ● T 67 ■ T 94

F3 ● T 51 ■ T 80

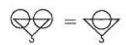
B A S
~T24 ~T27 ~T30

H AL GANCIO (SPECIALE A RICHIESTA) / HOOKS HEIGHT (SPECIAL ONE ON REQUEST)

DIAGRAMMI DI CARICO / LOAD DIAGRAMS

A 696 B5 - A5 - S5 - CITY 5

T	M	T											M 50	
			15	20	22,5	25	28,5	30	35	40	45	50		
			5	3,65	3,2	2,9	2,5		2,5	2,35	2	1,7	1,45	1,3
T	M	T											M 44	
			15,5	20	22,5	25	27,5	29,5	35	40	44			
			5	3,85	3,4	3	2,7	2,5		2,5	2,1	1,8	1,6	
T	M	T											M 38	
			16,5	20	22,5	25	27,5	31	35	38				
			5	4	3,55	3,15	2,85	2,5		2,5	2,2	2		
T	M	T											M 32	
			17	20	22,5	25	30	32						
			5	4,1	3,65	3,25	2,65	2,5		2,5				

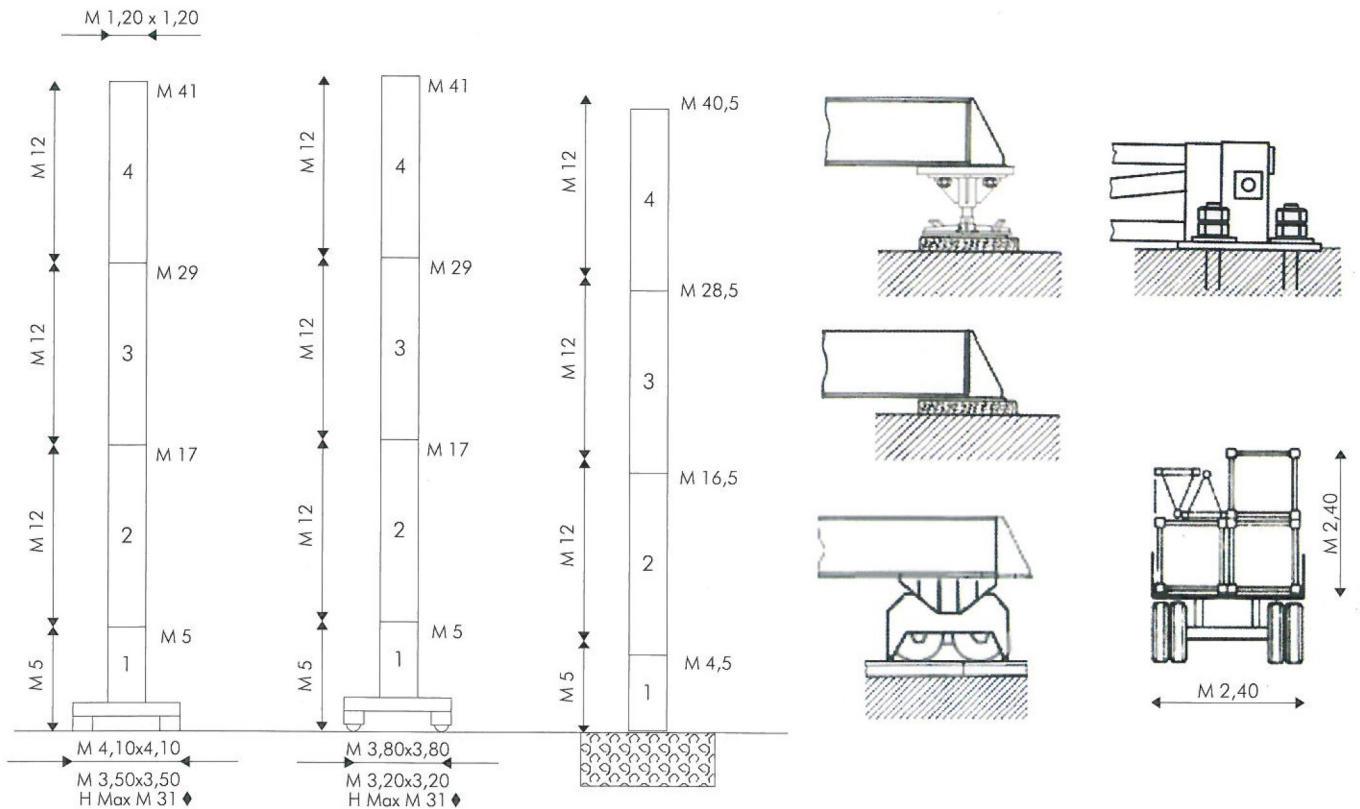


VERSIONE CITY / CITY CONFIGURATION

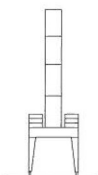
FISSA SU CARRO
FIXED ON CARRIAGE

TRASLANTE
TRAVELLING

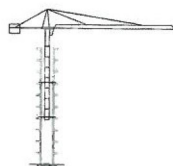
FISSA SENZA CARRO
FIXED WITHOUT CARRIAGE



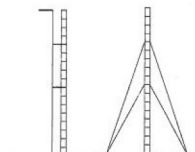
A PORTALE / PORTAL



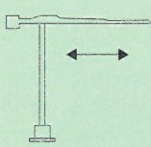
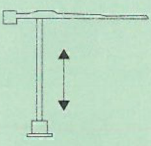
RAMPANTE / CLIMBING



ANCORATA / ANCHORED



MECCANISMI / MECHANISMS A 696 B5 - A5 - S5 - CITY 5

	HP	M/1'		HP	M/1'		T	
	3/4 (MRC 110)	25/50		15/15/4 (194 - 3VS)	I	5,5	2,5	
	3,5 ♦(SECAS III)	0 ▶ 60 (MICRO 0 - 5)			II	22	2,5	
	5 (SECAS III)	0 ▶ 0,8 (MICRO 0 - 0,1) (G/1'-REV/1')			III	44	1,3	
	2 x 5,5 (SECAS III)	0 ▶ 25 (MICRO 0 - 3)			♦	I	2,7	5
					II	11	5	
					III	22	2,6	
				♦	0 ▶ 50 4/8/20 40/50		2,5/2,5/2,5 1,3/1	
					0 ▶ 25 2/4/10 20/25		5/5/5 2,6/2	

ALIMENTAZIONE/POWER SUPPLY	V	400/50HZ	RADIOCOMANDO/RADIOCONTROL
ASSORBIMENTO/MAINS SUPPLY	KW	25/15♦	SET MONTAGGIO/ERECTION SET ♦
CABINA PENSILE/SLEWING CAB		♦	TIRO IN QUARTA/FOUR FALLS REEVING ♦
CONTRAPPESO/COUNTERWEIGHT	~T	20	ZAVORRA BASE/BASE BALLAST ~T 22▶83♦

dati non impegnativi e modifiche riservate / subject to modifications

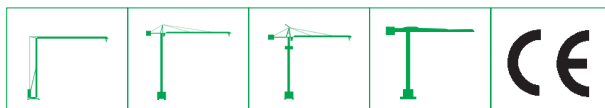
a richiesta / on request ♦

CARATTERISTICHE PRINCIPALI

STRUTTURE IN ACCIAIO FE 510C A NORME DIN • ACCOPIAMENTI SPINATI, SEDI ALESATE • PERNERIA, FUNI, PIATTAFORME, SCALE E PASSERELLE AEREE ZINCATE • RUOTISMI SU CUSCINETTI E RIDUTTORI EPICICLOIDALI IN PRESA DIRETTA • RALLA PRECARICATA E TRATTATA TERMICAMENTE, CON LUBRIFICAZIONE CENTRALIZZATA (ALFALUB) • ROTAZIONE ELETTRONICA A REGOLAZIONE CONTINUA DI VELOCITA' (SECAS III) • DISTRIBUZIONE A DUE VELOCITA', O SU RICHIESTA, A REGOLAZIONE CONTINUA DI VELOCITA' (SECAS III) • TRASLAZIONE ELETTRONICA A REGOLAZIONE CONTINUA DI VELOCITA' (SECAS III) • RUOTE DI TRASLAZIONE IN ACCIAIO FUCINATO, TRATTATE TERMICAMENTE • PIATTAFORMA GIREVOLE, CON I PRINCIPALI GRUPPI ELETTROMECCANICI A BORDO • TIRO IN QUARTA • CABINA PENSILE ROTANTE • ARMADIO ELETTRICO IN ACCIAIO INOX A NORME CEI • VERNICIATURA AD IMMERSIONE CON DOPPIA MANO DI SMALTO AL CROMO-ZINCO (DEPAS) • DISPOSITIVI DI SICUREZZA SECONDO LA DIRETTIVA MACCHINE EUROPEA "CE".

MAIN FEATURES

ST 510C STEEL STRUCTURES CONFORM TO DIN RULES • PINED CONNECTIONS, BORED SEATS • GALVANIZED PINS, ROPES, PLATFORMS, LADDERS AND FOOTPATHES • DRIVING MECHANISMS ON BEARINGS AND DIRECT DRIVE PLANETARY GEARS • PRELOADED AND HEAT TREATED SLEWING RING WITH CENTRALISED LUBRICATION (ALFALUB) • ELECTRONIC SLEWING WITH CONTINUOUS SPEED ADJUSTMENT (SECAS III) • TWO-SPEED TROLLEY WINCH OR, ON REQUEST, WITH CONTINUOUS SPEED ADJUSTMENT (SECAS III) • ELECTRONIC TRAVELLING WITH CONTINUOUS SPEED ADJUSTMENT (SECAS III) • FORGED STEEL TRAVELLING WHEELS HEAT TREATED • SLEWING PLATFORM WITH MAIN ELECTRO-MECHANICAL GROUPS ON BOARD • FOUR FALLS REEVING • SLEWING OPERATOR'S CAB • STAINLESS STEEL ELECTRICAL BOARD PANEL CONFORMS TO CEI RULES • DIPPING PAINTING WITH DOUBLE COAT OF CHROMIUM ZINC ENAMEL (DEPAS) • SAFETY DEVICES ACCORDING TO "CE" EUROPEAN MACHINE DIRECTIVE.



ALFA GRU srl
Via Pian di Vico 21/23
47863 Novafeltria (RN) - Tel. 0541 1480374
info@alfagru.com - www.alfagru.com

AGENTE / DEALER