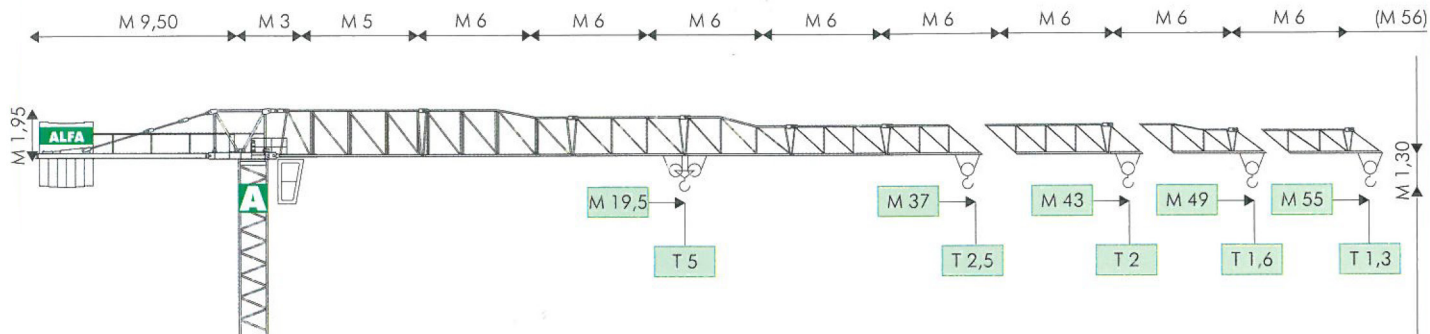




ALFA

A796

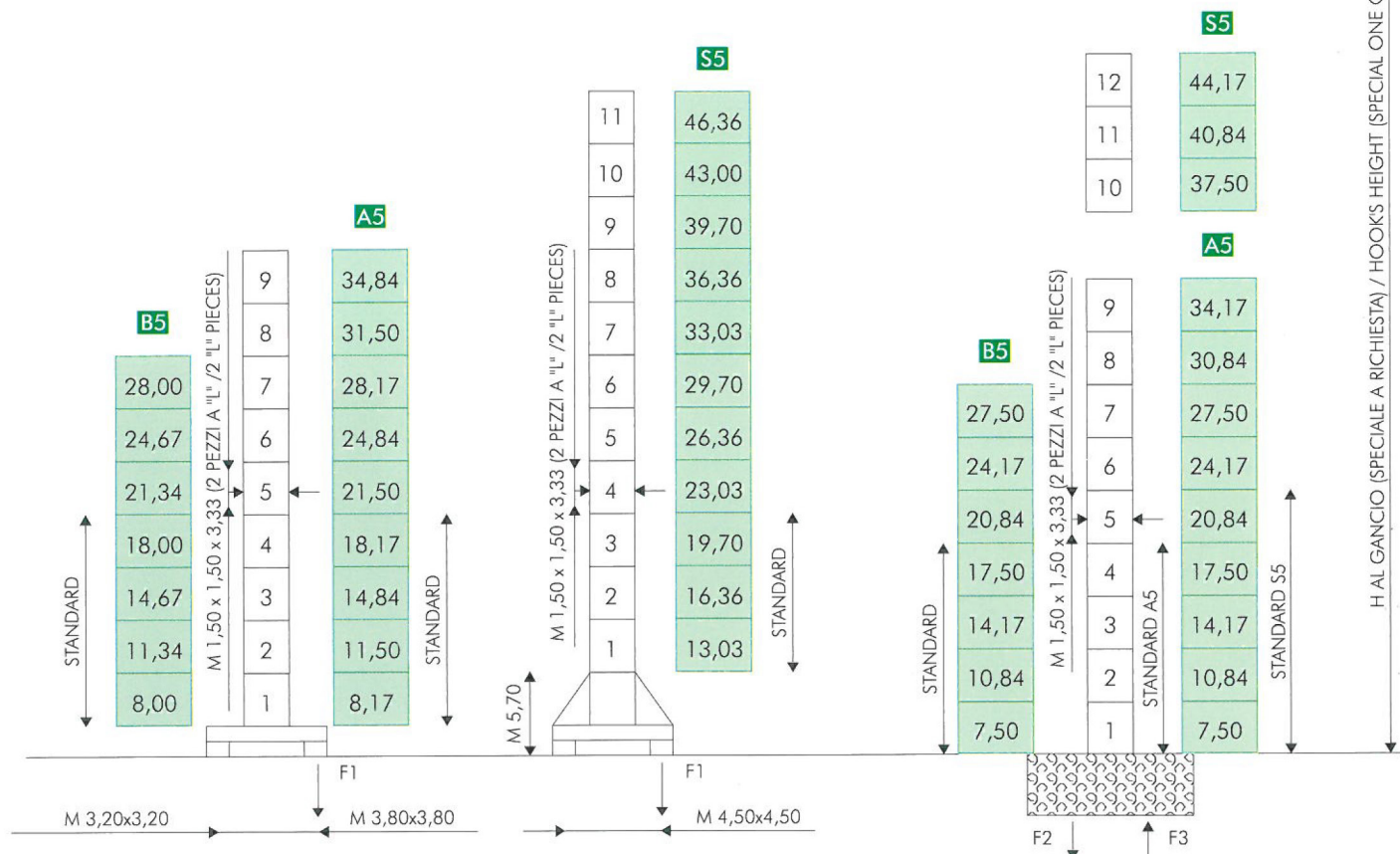
MODELLO / TYPE A 796 B5 - A5 - S5 - CITY 5



COMPOSIZIONE TORRE / TOWER SECTIONS

TRASLANTE (FISSA SU CARRO - M 0,60)
TRAVELLING (FIXED ON CARRIAGE - M 0,60)

FISSA SENZA CARRO
FIXED WITHOUT CARRIAGE



H AL GANCIO (SPECIALE A RICHIESTA) / HOOKS HEIGHT (SPECIAL ONE ON REQUEST)

● IN ESERCIZIO / IN SERVICE

■ FUORI ESERCIZIO / OUT OF SERVICE

F1	● T 46	■ T 48
----	--------	--------

F1	● T 52	■ T 54
----	--------	--------

F1	● T 58	■ T 75
----	--------	--------

	~T 28
--	-------

	~T 32
--	-------

	~T 35
--	-------

F2	● T 97	■ T 118
----	--------	---------

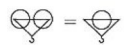
F3	● T 74	■ T 98
----	--------	--------

	B	A	S
	~T26	~T30	~T33

DIAGRAMMI DI CARICO / LOAD DIAGRAMS

A 796 B5 - A5 - S5 - CITY 5

T						2,5	2,2	1,95	1,65	1,45	1,3	
M		16	20	22,5	25	31	35	40	45	50	55	M 55
T		5	4,1	3,6	3,2	2,5						
T							2,5	2	1,75	1,6		
M		17,5	20	22,5	25	30	33	40	45	49		M 49
T		5	4,3	3,8	3,4	2,75	2,5					
T							2,5	2,15	2			
M		18,5	20	22,5	25	30	35	40	43			M 43
T		5	4,6	4	3,6	3	2,5					
T								2,5				
M		19,5	20	22,5	25	30	35	37				M 37
T		5	4,8	4,2	3,8	3,1	2,6	2,5				



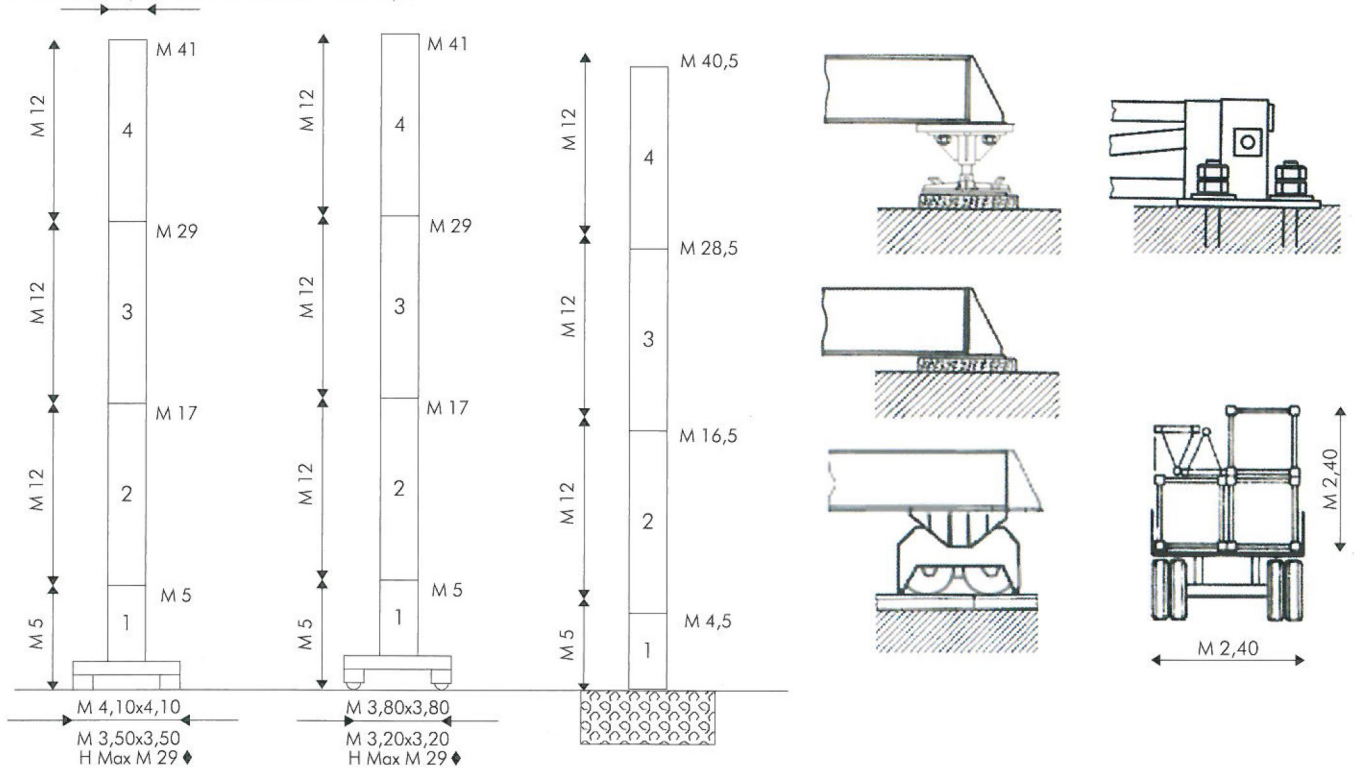
VERSIONE CITY / CITY CONFIGURATION

FISSA SU CARRO
FIXED ON CARRIAGE

TRASLANTE
TRAVELLING

FISSA SENZA CARRO
FIXED WITHOUT CARRIAGE

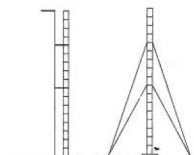
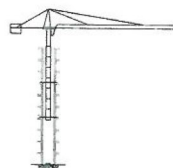
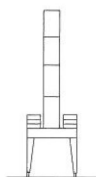
M 1,20 x 1,20 (TORRE PESANTE/HEAVY TOWER)
M 1,60 x 1,60 (TORRE LEGGERA/LIGHT TOWER) ◆



A PORTALE / PORTAL

RAMPANTE / CLIMBING

ANCORATA / ANCHORED



MECCANISMI / MECHANISMS A 796 B5 - A5 - S5 - CITY 5

	HP		M/1'			HP		M/1'		T
		3,5 ♦(SECAS III)	0 ▶60 (MICRO 0 - 5)				20/20/5 (194 - 3VS)	I	5,5	2,5
	2 x 3,5 (SECAS III)	0 ▶0,8 (MICRO 0 - 0,1) (G/1'-REV/1)	♦		II			25	2,5	
	2 x 5,5 (SECAS III)	0 ▶25 (MICRO 0 - 3)	♦		III			50	1,5	
			♦	I	2,5	5				
				♦	II	12,5		5		
				♦	III	25		3		
					20 ♦(MULTILIFT)	0 ▶60 4/8/20 50/60		2,5/2,5/2,5 1,3 /1		
						0 ▶30 2/4/10 25/30		5/5/5 2,6/2		

ALIMENTAZIONE/POWER SUPPLY	V	400/50HZ	RADIOCOMANDO/RADIOCONTROL
ASSORBIMENTO/MAINS SUPPLY	KW	32/20♦	SET MONTAGGIO/ERECTION SET ♦
CABINA PENSILE/SLEWING CAB		♦	TIRO IN QUARTA/FOUR FALLS REEVING ♦
CONTRAPPESO/COUNTERWEIGHT	~T	20	ZAVORRA BASE/BASE BALLAST ~T 27▶88 ♦

dati non impegnativi e modifiche riservate / subject to modifications

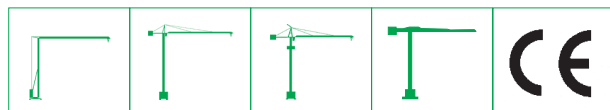
a richiesta / on request ♦

CARATTERISTICHE PRINCIPALI

STRUTTURE IN ACCIAIO FE 510C A NORME DIN • ACCOPPIAMENTI SPINATI, SEDI ALESATE • PERNERIA, FUNI, PIATTAFORME, SCALE E PASSERELLE AEREE ZINCATE • RUOTISMI SU CUSCINETTI E RIDUTTORI EPICICLOIDALI IN PRESA DIRETTA • RALLA PRECARICATA E TRATTATA TERMICAMENTE, CON LUBRIFICAZIONE CENTRALIZZATA (ALFALUB) • ROTAZIONE ELETTRONICA A REGOLAZIONE CONTINUA DI VELOCITA' (SECAS III) • DISTRIBUZIONE ELETTRONICA A REGOLAZIONE CONTINUA DI VELOCITA' (SECAS III) • TRASLAZIONE ELETTRONICA A REGOLAZIONE CONTINUA DI VELOCITA' (SECAS III) • RUOTE DI TRASLAZIONE IN ACCIAIO FUCINATO, TRATTATE TERMICAMENTE • PIATTAFORMA GIREVOLE, CON I PRINCIPALI GRUPPI ELETTROMECCANICI A BORDO • TIRO IN QUARTA • CABINA PENSILE ROTANTE • ARMADIO ELETTRICO IN ACCIAIO INOX A NORME CEI • VERNICIATURA AD IMMERSIONE CON DOPPIA MANO DI SMALTO AL CROMO-ZINCO (DEPAS) • DISPOSITIVI DI SICUREZZA SECONDO LA DIRETTIVA MACCHINE EUROPEA "CE".

MAIN FEATURES

ST 510C STEEL STRUCTURES CONFORM TO DIN RULES • PINED CONNECTIONS, BORED SEATS • GALVANIZED PINS, ROPES, PLATFORMS, LADDERS AND FOOTPATHES • DRIVING MECHANISMS ON BEARINGS AND DIRECT DRIVE PLANETARY GEARS • PRELOADED AND HEAT TREATED SLEWING RING WITH CENTRALISED LUBRICATION (ALFALUB) • ELECTRONIC SLEWING WITH CONTINUOUS SPEED ADJUSTMENT (SECAS III) • ELECTRONIC TROLLEY WINCH WITH CONTINUOUS SPEED ADJUSTMENT (SECAS III) • ELECTRONIC TRAVELLING WITH CONTINUOUS SPEED ADJUSTMENT (SECAS III) • FORGED STEEL TRAVELLING WHEELS HEAT TREATED • SLEWING PLATFORM WITH MAIN ELECTRO-MECHANICAL GROUPS ON BOARD • FOUR FALLS REEVING • SLEWING OPERATOR'S CAB • STAINLESS STEEL ELECTRICAL BOARD PANEL CONFORMS TO CEI RULES • DIPPING PAINTING WITH DOUBLE COAT OF CHROMIUM ZINC ENAMEL (DEPAS) • SAFETY DEVICES ACCORDING TO "CE" EUROPEAN MACHINE DIRECTIVE.



ALFA GRU srl
Via Pian di Vico 21/23
47863 Novafeltria (RN) - Tel. 0541 1480374
info@alfagru.com - www.alfagru.com

AGENTE / DEALER